

For Research Use Only

# GCAP2 Polyclonal antibody

Catalog Number: 22298-1-AP



## Basic Information

<b>Catalog Number:</b> 22298-1-AP	<b>GenBank Accession Number:</b> NM_002098	<b>Purification Method:</b> Antigen affinity purification
<b>Size:</b> 150ul , Concentration: 650 µg/ml by Nanodrop and 333 µg/ml by Bradford method using BSA as the standard;	<b>GeneID (NCBI):</b> 2979	<b>Recommended Dilutions:</b> WB 1:200-1:1000
<b>Source:</b> Rabbit	<b>Full Name:</b> guanylate cyclase activator 1B (retina)	
<b>Isotype:</b> IgG	<b>Calculated MW:</b> 23 kDa	
	<b>Observed MW:</b> 23 kDa	

## Applications

<b>Tested Applications:</b> WB, ELISA	<b>Positive Controls:</b> WB : rat retina tissue,
<b>Species Specificity:</b> human, rat	

## Background Information

### Storage

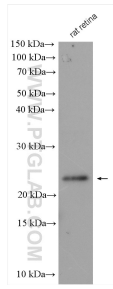
**Storage:**  
Store at -20°C. Stable for one year after shipment.  
**Storage Buffer:**  
PBS with 0.02% sodium azide and 50% glycerol pH 7.3.  
Aliquoting is unnecessary for -20°C storage

\*\*\* 20ul sizes contain 0.1% BSA

For technical support and original validation data for this product please contact:  
T: 1 (888) 4PTGLAB (1-888-478-4522) (toll free in USA), or 1(312) 455-8498 (outside USA)  
E: proteintech@ptglab.com  
W: ptglab.com

This product is exclusively available under Proteintech Group brand and is not available to purchase from any other manufacturer.

## Selected Validation Data



Rat retina tissue were subjected to SDS PAGE followed by western blot with 22298-1-AP (GCAP2 antibody) at dilution of 1:300 incubated at room temperature for 1.5 hours.