

For Research Use Only

# ITCH Polyclonal antibody

Catalog Number: 20920-1-AP

Featured Product

12 Publications



## Basic Information

### Catalog Number:

20920-1-AP

### Size:

150ul, Concentration: 300 µg/ml by Nanodrop and 233 µg/ml by Bradford method using BSA as the standard;

### Source:

Rabbit

### Isotype:

IgG

### Immunogen Catalog Number:

AG15120

### GenBank Accession Number:

BC011571

### GeneID (NCBI):

83737

### UNIPROT ID:

Q96J02

### Full Name:

itchy E3 ubiquitin protein ligase homolog (mouse)

### Calculated MW:

903 aa, 103 kDa

### Observed MW:

103 kDa, 70 kDa

### Purification Method:

Antigen affinity purification

### Recommended Dilutions:

WB 1:1000-1:4000

IP 0.5-4.0 µg for 1.0-3.0 mg of total protein lysate

IHC 1:50-1:500

## Applications

### Tested Applications:

WB, IP, IHC, ELISA

### Cited Applications:

WB, IP, IHC, CoIP

### Species Specificity:

human, mouse

### Cited Species:

human, rat, mouse

### Positive Controls:

WB: HEK-293 cells, U-251 cells, NIH/3T3 cells, K-562 cells, HeLa cells, Raji cells

IP: HEK-293 cells, HeLa cells

IHC: human breast cancer tissue,

**Note-IHC: suggested antigen retrieval with TE buffer pH 9.0; (\*) Alternatively, antigen retrieval may be performed with citrate buffer pH 6.0**

## Background Information

ITCH is an essential component of a ubiquitin-editing protein complex, comprising also TNFAIP3, TAX1BP1 and RNF11, that ensures the transient nature of inflammatory signaling pathways. It is involved in the regulation of apoptosis and reactive oxygen species levels through the ubiquitination and proteasomal degradation of TXNIP. ITCH can be cleaved by caspase-3, -6, and -7 on residue Asp240 and form a 65 kDa cleaved form (PMID: 19541840).

## Notable Publications

Author	Pubmed ID	Journal	Application
Qian Yun Ge	34841685	Clin Transl Med	WB,IP
Xiaodong Zhang	36258021	Oncogene	WB
Yuhong Zhang	34628513	J Mol Med (Berl)	WB

## Storage

### Storage:

Store at -20°C. Stable for one year after shipment.

### Storage Buffer:

PBS with 0.02% sodium azide and 50% glycerol pH 7.3.

Aliquoting is unnecessary for -20°C storage

\*\*\* 20ul sizes contain 0.1% BSA

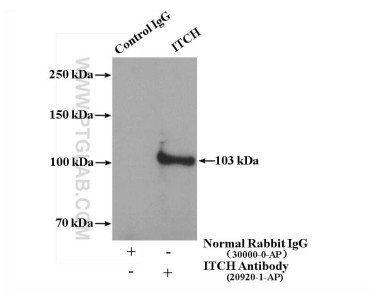
For technical support and original validation data for this product please contact:

T: 1 (888) 4PTGLAB (1-888-478-4522) (toll free in USA), or 1(312) 455-8498 (outside USA)

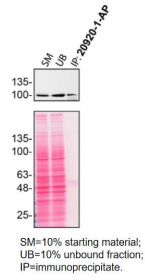
E: proteintech@ptglab.com  
W: ptglab.com

This product is exclusively available under Proteintech Group brand and is not available to purchase from any other manufacturer.

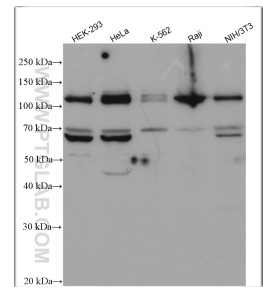
## Selected Validation Data



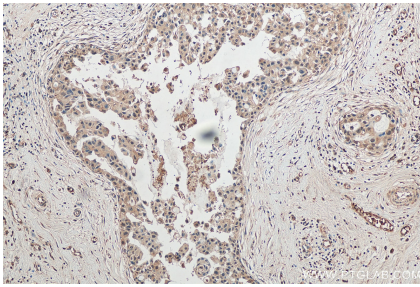
IP result of anti-ITCH (IP:20920-1-AP, 4ug; Detection:20920-1-AP 1:300) with HEK-293 cells lysate 2400 ug.



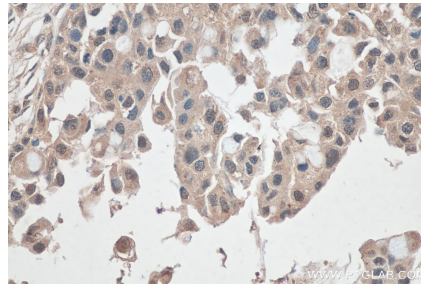
HeLa lysates prepared and IP of ITCH performed using 2.0 µg of 20920-1-AP coupled to protein A-Sepharose beads. The Ponceau stained transfers of each blot are shown. Data provided by YCharOS, an open science company with a mission to validate commercial antibodies to improve scientific reproducibility and transparency.



Various lysates were subjected to SDS PAGE followed by western blot with 20920-1-AP (ITCH antibody) at dilution of 1:2000 incubated at room temperature for 1.5 hours.



Immunohistochemical analysis of paraffin-embedded human breast cancer tissue slide using 20920-1-AP (ITCH antibody) at dilution of 1:200 (under 10x lens). Heat mediated antigen retrieval with Tris-EDTA buffer (pH 9.0).



Immunohistochemical analysis of paraffin-embedded human breast cancer tissue slide using 20920-1-AP (ITCH antibody) at dilution of 1:200 (under 40x lens). Heat mediated antigen retrieval with Tris-EDTA buffer (pH 9.0).