

For Research Use Only

CALCR Polyclonal antibody

Catalog Number: 20868-1-AP

6 Publications



Basic Information

Catalog Number: 20868-1-AP	GenBank Accession Number: BC075028	Purification Method: Antigen affinity purification
Size: 150ul, Concentration: 900 µg/ml by Nanodrop and 400 µg/ml by Bradford method using BSA as the standard;	GeneID (NCBI): 799	Recommended Dilutions: WB 1:200-1:1000
Source: Rabbit	UNIPROT ID: P30988	
Isotype: IgG	Full Name: calcitonin receptor	
Immunogen Catalog Number: AG14920	Calculated MW: 490 aa, 57 kDa	
	Observed MW: 70 kDa	

Applications

Tested Applications: WB, ELISA	Positive Controls: WB : MCF-7 cells, mouse brain tissue
Cited Applications: WB	
Species Specificity: human, mouse	
Cited Species: human, mouse	

Background Information

The CALCR protein, also known as the calcitonin receptor, is a high-affinity receptor for the peptide hormone calcitonin and belongs to the subfamily of seven transmembrane-spanning G protein-coupled receptors. This protein plays a critical role in maintaining calcium homeostasis and regulating osteoclast-mediated bone resorption. The calcitonin receptor is involved in several physiological processes, including inhibition of osteoclastic bone resorption and increased renal calcium excretion, which helps to regulate Ca²⁺ concentrations. In addition, the CALCR protein has been detected in a variety of tissues not directly involved in the regulation of calcium homeostasis, with particular expression observed in the brain, suggesting distinct functions in the central nervous system (CNS) (PMID: 12730726).

Notable Publications

Author	Pubmed ID	Journal	Application
Ming-Wei Lin	36135183	Curr Issues Mol Biol	WB
Fangyuan Shao	33304752	Adv Sci (Weinh)	WB
Yu Fu	34294046	Mol Med	WB

Storage

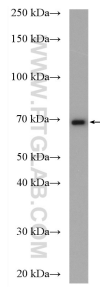
Storage:
Store at -20°C. Stable for one year after shipment.
Storage Buffer:
PBS with 0.02% sodium azide and 50% glycerol pH 7.3.
Aliquoting is unnecessary for -20°C storage

*** 20ul sizes contain 0.1% BSA

For technical support and original validation data for this product please contact:
T: 1 (888) 4PTGLAB (1-888-478-4522) (toll free in USA), or 1(312) 455-8498 (outside USA)
E: proteintech@ptglab.com
W: ptglab.com

This product is exclusively available under Proteintech Group brand and is not available to purchase from any other manufacturer.

Selected Validation Data



MCF-7 cells were subjected to SDS PAGE followed by western blot with 20868-1-AP (CALCR antibody) at dilution of 1:300 incubated at room temperature for 1.5 hours.