

For Research Use Only

MCT2 Polyclonal antibody

Catalog Number: 20355-1-AP **4 Publications**



Basic Information

Catalog Number: 20355-1-AP	GenBank Accession Number: BC030693	Purification Method: Antigen affinity purification
Size: 150ul , Concentration: 750 µg/ml by Nanodrop;	GeneID (NCBI): 9194	Recommended Dilutions: WB 1:500-1:1000 IHC 1:50-1:500
Source: Rabbit	UNIPROT ID: O60669	
Isotype: IgG	Full Name: solute carrier family 16, member 7 (monocarboxylic acid transporter 2)	
Immunogen Catalog Number: AG14201	Calculated MW: 478 aa, 52 kDa	
	Observed MW: 40-52 kDa	

Applications

Tested Applications: IHC, WB, ELISA	Positive Controls: WB : SH-SY5Y cells, HEK-293 cells, K-562 cells IHC : mouse heart tissue,
Cited Applications: IF, WB	
Species Specificity: human, mouse	
Cited Species: human, rat, mouse	

Note-IHC: suggested antigen retrieval with TE buffer pH 9.0; (*) Alternatively, antigen retrieval may be performed with citrate buffer pH 6.0

Background Information

SLC16A7, also named MCT2, is a proton-coupled monocarboxylate transporter catalyzing the rapid transport across the plasma membrane of many monocarboxylates. It has been reported that SLC16A7 is the primary monocarboxylate transporter in Purkinje cells and can be detected in the brain, cerebellum, liver, and kidney, but not in vascular smooth muscle cells, pericytes, endothelium, heart, lung, or stomach. There are some isoforms of SLC16A7 with bands around 52 kDa and 40-45 kDa in SDS-PAGE. The 80 kDa protein might be the dimer similar to the papers published. (PMID: 9482213, 15749979, 11291733, 16901736)

Notable Publications

Author	Pubmed ID	Journal	Application
Wiktoria Blaszcak	35840734	Br J Cancer	WB
Shuohui Dong	34998404	J Exp Clin Cancer Res	WB
Xiaorong Yu	34234890	Anim Cells Syst (Seoul)	WB, IF

Storage

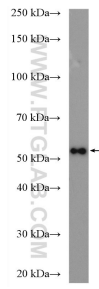
Storage:
Store at -20°C. Stable for one year after shipment.
Storage Buffer:
PBS with 0.02% sodium azide and 50% glycerol pH 7.3.
Aliquoting is unnecessary for -20°C storage

***** 20ul sizes contain 0.1% BSA**

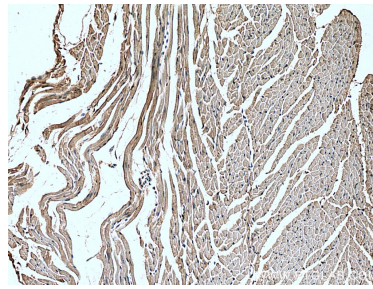
For technical support and original validation data for this product please contact:
T: 1 (888) 4PTGLAB (1-888-478-4522) (toll free in USA), or 1(312) 455-8498 (outside USA)
E: proteintech@ptglab.com
W: ptglab.com

This product is exclusively available under Proteintech Group brand and is not available to purchase from any other manufacturer.

Selected Validation Data



SH-SY5Y cells were subjected to SDS PAGE followed by western blot with 20355-1-AP (MCT2 antibody) at dilution of 1:500 incubated at room temperature for 1.5 hours.



Immunohistochemical analysis of paraffin-embedded mouse heart tissue slide using 20355-1-AP (MCT2 antibody) at dilution of 1:200 (under 10x lens). Heat mediated antigen retrieval with Tris-EDTA buffer (pH 9.0).