

For Research Use Only

Serotonin transporter Polyclonal antibody



Catalog Number: 19559-1-AP

Featured Product

8 Publications

Basic Information

Catalog Number:

19559-1-AP

Size:

150ul, Concentration: 750 µg/ml by Nanodrop;

Source:

Rabbit

Isotype:

IgG

GenBank Accession Number:

NM_001045

GeneID (NCBI):

6532

UNIPROT ID:

P31645

Full Name:

solute carrier family 6 (neurotransmitter transporter, serotonin), member 4

Calculated MW:

70 kDa

Observed MW:

70 kDa and 140 kDa

Purification Method:

Antigen affinity purification

Recommended Dilutions:

WB 1:500-1:1000

IHC 1:50-1:500

Applications

Tested Applications:

WB, IHC, ELISA

Cited Applications:

WB, IHC

Species Specificity:

human, mouse, rat

Cited Species:

human, rat, mouse

Note-IHC: suggested antigen retrieval with TE buffer pH 9.0; (*) Alternatively, antigen retrieval may be performed with citrate buffer pH 6.0

Positive Controls:

WB : SH-SY5Y cells, mouse brain tissue, rat brain tissue

IHC : mouse lung tissue,

Background Information

Serotonin transporter (SERT; SLC6A4) belongs to the sodium- and chloride-dependent monoamine transporter family. SERT is a membrane transporter that terminates the neurotransmission of serotonin, a monoaminergic neurotransmitter, through its reuptake. The SERT uptake mechanism acquires energy for active transport via ATP hydrolysis or via movement against electrochemical gradients. As an oligomeric N-glycan, SERT contains disulfide bonds between cysteine residues on the second extracellular domain. Post-translational modifications regulate the uptake kinetics and membrane trafficking of SERT, in part by regulating the proper folding and assembly of SERT in a host-dependent manner (PMID: 30394319). This antibody detected 70 kDa and 140 kDa bands in SDS-PAGE. The 140 kDa band corresponds to the dimer of high mannose-type SERT (PMID: 19323988).

Notable Publications

Author	Pubmed ID	Journal	Application
Susu Lin	36169685	Psychopharmacology (Berl)	WB
Yicong Li	26956613	Sci Rep	WB
Jane L Tarry-Adkins	35784487	Front Cell Dev Biol	WB

Storage

Storage:

Store at -20°C. Stable for one year after shipment.

Storage Buffer:

PBS with 0.02% sodium azide and 50% glycerol pH 7.3.

Aliquoting is unnecessary for -20°C storage

*** 20ul sizes contain 0.1% BSA

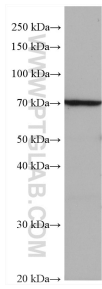
For technical support and original validation data for this product please contact:

T: 1 (888) 4PTGLAB (1-888-478-4522) (toll free in USA), or 1(312) 455-8498 (outside USA)

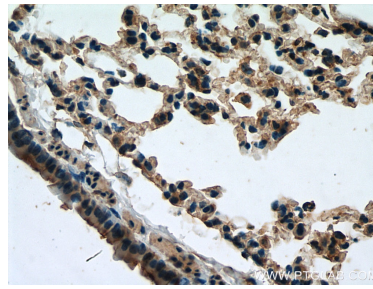
E: proteintech@ptglab.com
W: ptglab.com

This product is exclusively available under Proteintech Group brand and is not available to purchase from any other manufacturer.

Selected Validation Data



SH-SY5Y cells were subjected to SDS PAGE followed by western blot with 19559-1-AP (Serotonin transporter antibody) at dilution of 1:800 incubated at room temperature for 1.5 hours.



Immunohistochemical analysis of paraffin-embedded mouse lung tissue slide using 19559-1-AP (Serotonin transporter antibody) at dilution of 1:200 (under 10x lens). Heat mediated antigen retrieval with Tris-EDTA buffer (pH 9.0).