

For Research Use Only

RFC1 Polyclonal antibody

Catalog Number: 19159-1-AP

Featured Product



Basic Information

Catalog Number: 19159-1-AP	GenBank Accession Number: BC051751	Purification Method: Antigen affinity purification
Size: 150ul , Concentration: 450 µg/ml by Nanodrop and 333 µg/ml by Bradford method using BSA as the standard;	GeneID (NCBI): 5981	Recommended Dilutions: WB 1:500-1:3000
Source: Rabbit	Full Name: replication factor C (activator 1) 1, 145kDa	
Isotype: IgG	Calculated MW: 128 kDa	
Immunogen Catalog Number: AG13585	Observed MW: 128-150 kDa	

Applications

Tested Applications: WB,ELISA	Positive Controls: WB : Jurkat cells, HeLa cells
Species Specificity: human	

Background Information

Storage

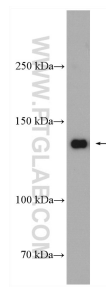
Storage:
Store at -20°C. Stable for one year after shipment.
Storage Buffer:
PBS with 0.02% sodium azide and 50% glycerol pH 7.3.
Aliquoting is unnecessary for -20°C storage

*** 20ul sizes contain 0.1% BSA

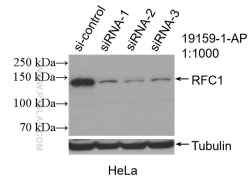
For technical support and original validation data for this product please contact:
T: 1 (888) 4PTGLAB (1-888-478-4522) (toll free in USA), or 1(312) 455-8498 (outside USA) E: proteintech@ptglab.com
W: ptglab.com

This product is exclusively available under Proteintech Group brand and is not available to purchase from any other manufacturer.

Selected Validation Data



Jurkat cells were subjected to SDS PAGE followed by western blot with 19159-1-AP (RFC1 antibody) at dilution of 1:1500 incubated at room temperature for 1.5 hours.



WB result of RFC1 antibody (19159-1-AP; 1:1000; incubated at room temperature for 1.5 hours) with sh-Control and sh-RFC1 transfected HeLa cells.