

For Research Use Only

MRPS30 Polyclonal antibody

Catalog Number: 18441-1-AP



Basic Information

Catalog Number: 18441-1-AP	GenBank Accession Number: BC007735	Purification Method: Antigen affinity purification
Size: 150ul , Concentration: 200 µg/ml by Nanodrop and 187 µg/ml by Bradford method using BSA as the standard;	GeneID (NCBI): 10884	Recommended Dilutions: IF 1:50-1:500
Source: Rabbit	Full Name: mitochondrial ribosomal protein S30	
Isotype: IgG	Calculated MW: 439 aa, 50 kDa	
Immunogen Catalog Number: AG13271	Observed MW: 50 kDa	

Applications

Tested Applications: IF, WB, ELISA	Positive Controls: IF : HepG2 cells,
Species Specificity: human, mouse, rat	

Background Information

Storage

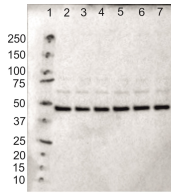
Storage:
Store at -20°C. Stable for one year after shipment.
Storage Buffer:
PBS with 0.02% sodium azide and 50% glycerol pH 7.3.
Aliquoting is unnecessary for -20°C storage

*** 20ul sizes contain 0.1% BSA

For technical support and original validation data for this product please contact:
T: 1 (888) 4PTGLAB (1-888-478-4522) (toll free in USA), or 1(312) 455-8498 (outside USA) E: proteintech@ptglab.com
W: ptglab.com

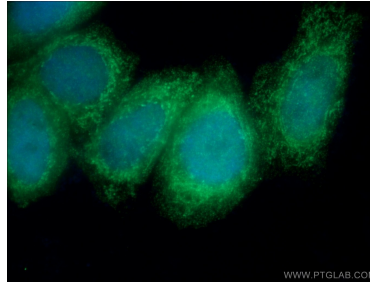
This product is exclusively available under Proteintech Group brand and is not available to purchase from any other manufacturer.

Selected Validation Data



Lane 1 contains BioRad dual color protein standard.
Lanes 2-7 each contain 15 μ g of control human myotube protein.

WB result of MRPS30 antibody (18441-1-AP, 1:1000) with with 15 μ g of control human myotube protein by Max Pohjanpelto, University of Helsinki.



Immunofluorescent analysis of (4% PFA) fixed HepG2 cells using 18441-1-AP (MRPS30 antibody) at dilution of 1:50 and Alexa Fluor 488-conjugated AffiniPure Goat Anti-Rabbit IgG(H+L).