

For Research Use Only

# PDE6G/H Polyclonal antibody

Catalog Number: 18151-1-AP



## Basic Information

**Catalog Number:**  
18151-1-AP

**Size:**  
150ul , Concentration: 550 µg/ml by Nanodrop and 400 µg/ml by Bradford method using BSA as the standard;

**Source:**  
Rabbit

**Isotype:**  
IgG

**Immunogen Catalog Number:**  
AG12847

**GenBank Accession Number:**  
BC093738

**GeneID (NCBI):**  
5149

**Full Name:**  
phosphodiesterase 6H, cGMP-specific,  
cone, gamma

**Calculated MW:**  
83 aa, 9 kDa

**Observed MW:**  
9 kDa

**Purification Method:**  
Antigen affinity purification

**Recommended Dilutions:**  
WB 1:200-1:1000  
IP 0.5-4.0 ug for IP and 1:200-1:1000 for WB

## Applications

**Tested Applications:**  
IP, WB, ELISA

**Species Specificity:**  
human, mouse, rat

**Positive Controls:**

**WB :** mouse eye tissue,

**IP :** mouse eye tissue,

## Background Information

### Storage

**Storage:**

Store at -20°C. Stable for one year after shipment.

**Storage Buffer:**

PBS with 0.02% sodium azide and 50% glycerol pH 7.3.

Aliquoting is unnecessary for -20°C storage

**\*\*\* 20ul sizes contain 0.1% BSA**

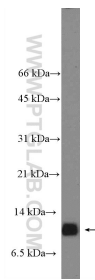
For technical support and original validation data for this product please contact:

T: 1 (888) 4PTGLAB (1-888-478-4522) (toll free in USA), or 1(312) 455-8498 (outside USA)

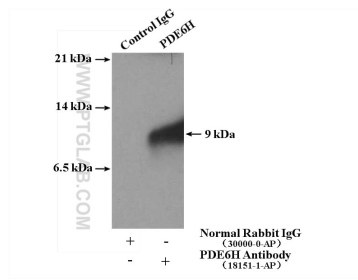
E: [proteintech@ptglab.com](mailto:proteintech@ptglab.com)  
W: [ptglab.com](http://ptglab.com)

**This product is exclusively available under Proteintech Group brand and is not available to purchase from any other manufacturer.**

## Selected Validation Data



mouse eye tissue were subjected to SDS PAGE followed by western blot with 18151-1-AP (PDE6H Antibody) at dilution of 1:300 incubated at room temperature for 1.5 hours.



IP result of anti-PDE6H (IP:18151-1-AP, 4ug; Detection:18151-1-AP 1:300) with mouse eye tissue lysate 4000 ug.