

For Research Use Only

CPNE7 Polyclonal antibody

Catalog Number: 17396-1-AP

Featured Product

2 Publications



Basic Information

Catalog Number:

17396-1-AP

Size:

150ul, Concentration: 400 µg/ml by Nanodrop and 280 µg/ml by Bradford method using BSA as the standard;

Source:

Rabbit

Isotype:

IgG

Immunogen Catalog Number:

AG11313

GenBank Accession Number:

BC035334

GeneID (NCBI):

27132

UNIPROT ID:

Q9UBL6

Full Name:

copine VII

Calculated MW:

558 aa, 62 kDa

Observed MW:

65-70 kDa

Purification Method:

Antigen affinity purification

Recommended Dilutions:

WB 1:1000-1:8000

Applications

Tested Applications:

WB, ELISA

Cited Applications:

WB

Species Specificity:

human, mouse, rat

Cited Species:

human

Positive Controls:

WB : COLO 320 cells, mouse brain tissue, rat brain tissue

Background Information

Copines are a family of evolutionarily conserved calcium-dependent phospholipid-binding proteins (PMID: 9430674). They contain two Ca(2+)- and phospholipid-binding domains known as C2 domains. Copines are potentially involved in regulating membrane trafficking and in protein-protein interactions.

Notable Publications

Author	Pubmed ID	Journal	Application
Tianwei Chen	36453019	Mol Oncol	WB
Tianwen Yu	37469397	Front Oncol	WB

Storage

Storage:

Store at -20°C. Stable for one year after shipment.

Storage Buffer:

PBS with 0.02% sodium azide and 50% glycerol pH 7.3.

Aliquoting is unnecessary for -20°C storage

*** 20ul sizes contain 0.1% BSA

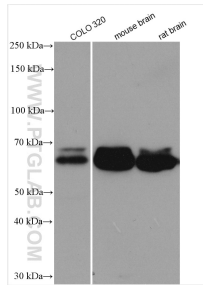
For technical support and original validation data for this product please contact:

T: 1 (888) 4PTGLAB (1-888-478-4522) (toll free in USA), or 1(312) 455-8498 (outside USA)

E: proteintech@ptglab.com
W: ptglab.com

This product is exclusively available under Proteintech Group brand and is not available to purchase from any other manufacturer.

Selected Validation Data



Various lysates were subjected to SDS PAGE followed by western blot with 17396-1-AP (CPNE7 antibody) at dilution of 1:4000 incubated at room temperature for 1.5 hours.