

For Research Use Only

METTL7A Polyclonal antibody

Catalog Number: 17092-1-AP

Featured Product



Basic Information

Catalog Number: 17092-1-AP	GenBank Accession Number: BC008180	Purification Method: Antigen affinity purification
Size: 150ul , Concentration: 400 µg/ml by Nanodrop and 267 µg/ml by Bradford method using BSA as the standard;	GeneID (NCBI): 25840	Recommended Dilutions: WB 1:5000-1:50000 IHC 1:200-1:800
Source: Rabbit	UNIPROT ID: Q9H8H3	
Isotype: IgG	Full Name: methyltransferase like 7A	
Immunogen Catalog Number: AG10013	Calculated MW: 28 kDa	
	Observed MW: 25-28 kDa	

Applications

Tested Applications:

WB, IHC, ELISA

Species Specificity:

human, mouse, rat

Note-IHC: suggested antigen retrieval with TE buffer pH 9.0; (*) Alternatively, antigen retrieval may be performed with citrate buffer pH 6.0

Positive Controls:

WB : HepG2 cells, HeLa cells, mouse lung tissue, rat lung tissue, mouse liver tissue

IHC : human liver cancer tissue, human thyroid cancer tissue

Storage

Storage:

Store at -20°C. Stable for one year after shipment.

Storage Buffer:

PBS with 0.02% sodium azide and 50% glycerol pH 7.3.

Aliquoting is unnecessary for -20°C storage

*** 20ul sizes contain 0.1% BSA

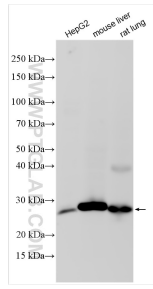
For technical support and original validation data for this product please contact:

T: 1 (888) 4PTGLAB (1-888-478-4522) (toll free in USA), or 1(312) 455-8498 (outside USA)

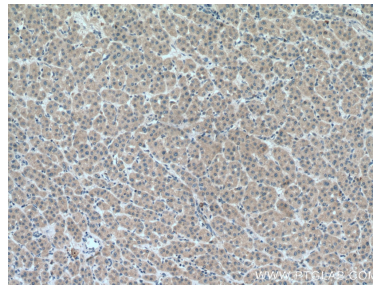
E: proteintech@ptglab.com
W: ptglab.com

This product is exclusively available under Proteintech Group brand and is not available to purchase from any other manufacturer.

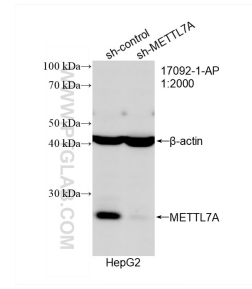
Selected Validation Data



Various lysates were subjected to SDS PAGE followed by western blot with 17092-1-AP (METTL7A antibody) at dilution of 1:15000 incubated at room temperature for 1.5 hours.



Immunohistochemical analysis of paraffin-embedded human liver cancer tissue slide using 17092-1-AP (METTL7A antibody) at dilution of 1:400 (under 10x lens). Heat mediated antigen retrieval with Tris-EDTA buffer (pH 9.0).



WB result of METTL7A antibody (17092-1-AP; 1:2000; incubated at room temperature for 1.5 hours) with sh-Control and sh-METTL7A transfected HepG2 cells.