

For Research Use Only

# RCC2 Polyclonal antibody

Catalog Number: 16755-1-AP **1 Publications**



## Basic Information

<b>Catalog Number:</b> 16755-1-AP	<b>GenBank Accession Number:</b> BC042141	<b>Purification Method:</b> Antigen affinity purification
<b>Size:</b> 150ul , Concentration: 500 µg/ml by Nanodrop and 267 µg/ml by Bradford method using BSA as the standard;	<b>GeneID (NCBI):</b> 55920	<b>Recommended Dilutions:</b> WB 1:1000-1:4000 IHC 1:250-1:1000
<b>Source:</b> Rabbit	<b>Full Name:</b> regulator of chromosome condensation 2	
<b>Isotype:</b> IgG	<b>Calculated MW:</b> 522 aa, 56 kDa	
<b>Immunogen Catalog Number:</b> AG10271	<b>Observed MW:</b> 56 kDa	

## Applications

### Tested Applications:

IHC, WB, ELISA

### Cited Applications:

WB

### Species Specificity:

human, mouse, rat

### Cited Species:

human

**Note-IHC: suggested antigen retrieval with TE buffer pH 9.0; (\*) Alternatively, antigen retrieval may be performed with citrate buffer pH 6.0**

### Positive Controls:

**WB** : HEK-293T cells, PC-3 cells, HeLa cells, HUVEC cells, MOLT-4 cells, NCI-H1299 cells

**IHC** : human colon cancer tissue, human ovary tumor tissue, human stomach cancer tissue, mouse testis tissue, rat colon tissue, rat testis tissue

## Background Information

RCC2 (also known as TD60) is a guanine exchange factor that is active on RalA, a small GTPase. RCC2 and RalA are both essential for proper kinetochore-microtubule function in early mitosis. RCC2 has been shown to be a biomarker for colorectal cancer.

## Notable Publications

Author	Pubmed ID	Journal	Application
Nan Zhang	35217832	Exp Mol Med	WB

## Storage

### Storage:

Store at -20°C. Stable for one year after shipment.

### Storage Buffer:

PBS with 0.02% sodium azide and 50% glycerol pH 7.3.

Aliquoting is unnecessary for -20°C storage

\*\*\* 20ul sizes contain 0.1% BSA

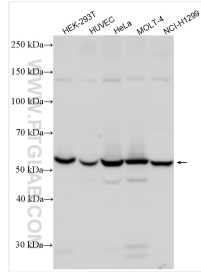
For technical support and original validation data for this product please contact:

T: 1 (888) 4PTGLAB (1-888-478-4522) (toll free in USA), or 1(312) 455-8498 (outside USA)

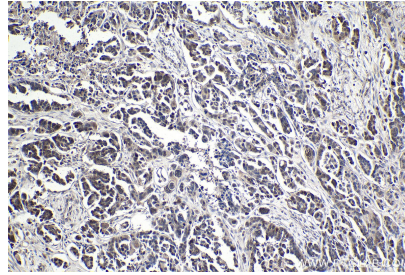
E: [proteintech@ptglab.com](mailto:proteintech@ptglab.com)  
W: [ptglab.com](http://ptglab.com)

This product is exclusively available under Proteintech Group brand and is not available to purchase from any other manufacturer.

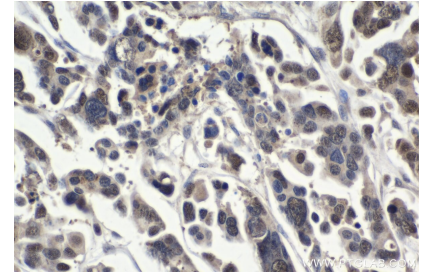
## Selected Validation Data



Various lysates were subjected to SDS PAGE followed by western blot with 16755-1-AP (RCC2 antibody) at dilution of 1:2000 incubated at room temperature for 1.5 hours.



Immunohistochemical analysis of paraffin-embedded human colon cancer tissue slide using 16755-1-AP (RCC2 antibody) at dilution of 1:500 (under 10x lens). Heat mediated antigen retrieval with Tris-EDTA buffer (pH 9.0).



Immunohistochemical analysis of paraffin-embedded human colon cancer tissue slide using 16755-1-AP (RCC2 antibody) at dilution of 1:500 (under 40x lens). Heat mediated antigen retrieval with Tris-EDTA buffer (pH 9.0).