

For Research Use Only

CTSZ Polyclonal antibody

Catalog Number: 16578-1-AP **2 Publications**



Basic Information

Catalog Number:

16578-1-AP

Size:

150ul , Concentration: 400 µg/ml by Nanodrop and 267 µg/ml by Bradford method using BSA as the standard;

Source:

Rabbit

Isotype:

IgG

Immunogen Catalog Number:

AG9865

GenBank Accession Number:

BC042168

GeneID (NCBI):

1522

UNIPROT ID:

Q9UBR2

Full Name:

cathepsin Z

Calculated MW:

303 aa, 34 kDa

Observed MW:

34-37 kDa

Purification Method:

Antigen affinity purification

Recommended Dilutions:

WB 1:500-1:3000

IP 0.5-4.0 ug for 1.0-3.0 mg of total protein lysate

IHC 1:50-1:500

Applications

Tested Applications:

WB, IP, IHC, ELISA

Cited Applications:

WB, IF

Species Specificity:

human, mouse, rat

Cited Species:

human, mouse

Note-IHC: suggested antigen retrieval with TE buffer pH 9.0; (*) Alternatively, antigen retrieval may be performed with citrate buffer pH 6.0

Positive Controls:

WB : HeLa cells, mouse heart tissue

IP : HeLa cells,

IHC : human pancreas tissue,

Notable Publications

Author	Pubmed ID	Journal	Application
Hongwei Chu	34932315	Anal Chem	WB
Yujun Hou	38753870	Alzheimers Dement	WB,IF

Storage

Storage:

Store at -20°C. Stable for one year after shipment.

Storage Buffer:

PBS with 0.02% sodium azide and 50% glycerol pH 7.3.

Aliquoting is unnecessary for -20°C storage

***** 20ul sizes contain 0.1% BSA**

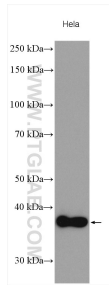
For technical support and original validation data for this product please contact:

T: 1 (888) 4PTGLAB (1-888-478-4522) (toll free in USA), or 1(312) 455-8498 (outside USA)

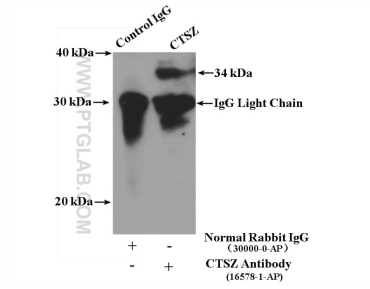
E: proteintech@ptglab.com
W: ptglab.com

This product is exclusively available under Proteintech Group brand and is not available to purchase from any other manufacturer.

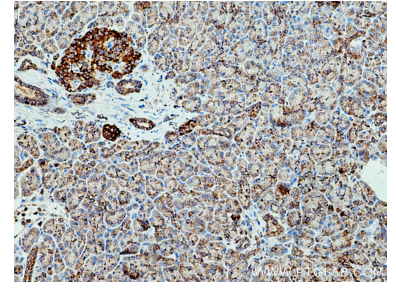
Selected Validation Data



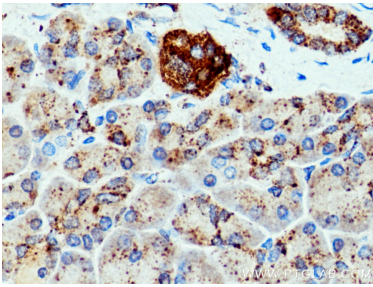
HeLa cells were subjected to SDS PAGE followed by western blot with 16578-1-AP (CTSZ antibody) at dilution of 1:1500 incubated at room temperature for 1.5 hours.



IP result of anti-CTSZ (IP:16578-1-AP, 4ug; Detection:16578-1-AP 1:300) with HeLa cells lysate 2500ug.



Immunohistochemical analysis of paraffin-embedded human pancreas tissue slide using 16578-1-AP (CTSZ antibody) at dilution of 1:200 (under 10x lens). Heat mediated antigen retrieval with Tris-EDTA buffer (pH 9.0).



Immunohistochemical analysis of paraffin-embedded human pancreas tissue slide using 16578-1-AP (CTSZ antibody) at dilution of 1:200 (under 40x lens). Heat mediated antigen retrieval with Tris-EDTA buffer (pH 9.0).