

For Research Use Only

Pancreatic Polypeptide Polyclonal antibody



Catalog Number: 15493-1-AP

3 Publications

Basic Information

Catalog Number:

15493-1-AP

Size:

150ul, Concentration: 500 µg/ml by Nanodrop;

Source:

Rabbit

Isotype:

IgG

Immunogen Catalog Number:

AG7886

GenBank Accession Number:

BC032225

GeneID (NCBI):

5539

UNIPROT ID:

P01298

Full Name:

pancreatic polypeptide

Calculated MW:

10 kDa

Purification Method:

Antigen affinity purification

Recommended Dilutions:

IHC 1:1000-1:4000

IF-P 1:50-1:500

Applications

Tested Applications:

IHC, IF-P, ELISA

Cited Applications:

IHC, IF

Species Specificity:

human, mouse, rat

Cited Species:

mouse

Note-IHC: suggested antigen retrieval with TE buffer pH 9.0; (*) Alternatively, antigen retrieval may be performed with citrate buffer pH 6.0

Positive Controls:

IHC : mouse pancreas tissue,

IF-P : rat pancreas tissue,

Notable Publications

Author	Pubmed ID	Journal	Application
Nader Goodarzi	38459816	Vet Med Sci	IF
Jiajun Sun	37963393	Diabetes	IF
M Honarpisheh	36685665	Transpl Int	IHC

Storage

Storage:

Store at -20°C. Stable for one year after shipment.

Storage Buffer:

PBS with 0.02% sodium azide and 50% glycerol pH 7.3.

Aliquoting is unnecessary for -20°C storage

*** 20ul sizes contain 0.1% BSA

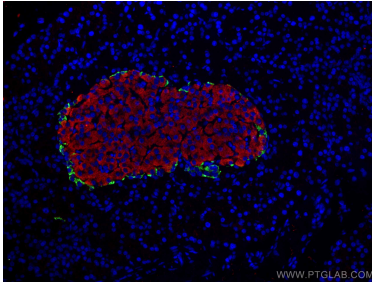
For technical support and original validation data for this product please contact:

T: 1 (888) 4PTGLAB (1-888-478-4522) (toll free in USA), or 1(312) 455-8498 (outside USA)

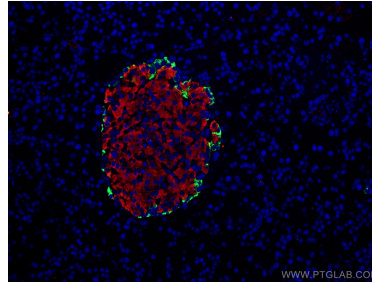
E: proteintech@ptglab.com
W: ptglab.com

This product is exclusively available under Proteintech Group brand and is not available to purchase from any other manufacturer.

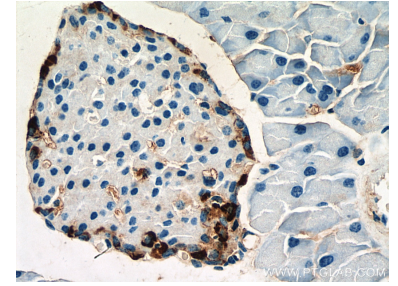
Selected Validation Data



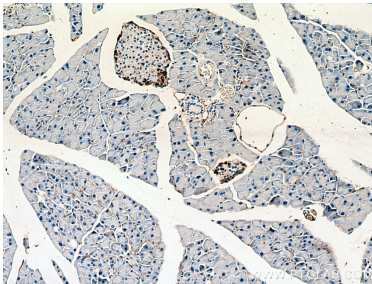
Immunofluorescent analysis of (4% PFA) fixed rat pancreas tissue using Pancreatic Polypeptide antibody (15493-1-AP) at dilution of 1:200 and CoraLite®488-Conjugated AffiniPure Goat Anti-Rabbit IgG(H+L), Pancreatic Polypeptide antibody (15493-1-AP, green) stained on PP cells in rat pancreas islet. Glucagon antibody (67286-1-Ig, Clone: 2A8G1, red) stained on α cells in rat pancreas islet.



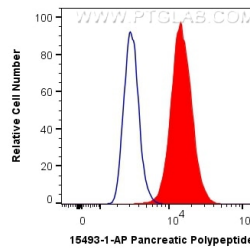
Immunofluorescent analysis of (4% PFA) fixed rat pancreas tissue using Pancreatic Polypeptide antibody (15493-1-AP) at dilution of 1:200 and CoraLite®488-Conjugated AffiniPure Goat Anti-Rabbit IgG(H+L), Pancreatic Polypeptide antibody (15493-1-AP) (green) stained on PP cells in rat pancreas islet. Glucagon antibody (67286-1-Ig, Clone: 2A8G1, red) stained on α cells in rat pancreas islet.



Immunohistochemical analysis of paraffin-embedded mouse pancreas tissue slide using 15493-1-AP (Pancreatic Polypeptide antibody) at dilution of 1:2000 (under 40x lens). Heat mediated antigen retrieval with Tris-EDTA buffer (pH 9.0).



Immunohistochemical analysis of paraffin-embedded mouse pancreas tissue slide using 15493-1-AP (Pancreatic Polypeptide antibody) at dilution of 1:2000 (under 10x lens). Heat mediated antigen retrieval with Tris-EDTA buffer (pH 9.0).



1X10⁶ HepG2 cells were intracellularly stained with 0.4 μ g Anti-Human Pancreatic Polypeptide (15493-1-AP) and CoraLite®488-Conjugated AffiniPure Goat Anti-Rabbit IgG(H+L) at dilution 1:1000 (red), or 0.4 μ g Control Antibody. Cells were fixed with 4% PFA and permeabilized with Flow Cytometry Perm Buffer (PF00011-C).