

For Research Use Only

RPL36 Polyclonal antibody

Catalog Number: 15145-1-AP **2 Publications**



Basic Information

Catalog Number: 15145-1-AP	GenBank Accession Number: BC003052	Purification Method: Antigen affinity purification
Size: 150ul , Concentration: 450 ug/ml by Nanodrop and 300 ug/ml by Bradford method using BSA as the standard;	GeneID (NCBI): 25873	Recommended Dilutions: WB 1:500-1:1000 IF/ICC 1:200-1:800
Source: Rabbit	UNIPROT ID: Q9Y3U8	
Isotype: IgG	Full Name: ribosomal protein L36	
Immunogen Catalog Number: AG7437	Calculated MW: 12 kDa	
	Observed MW: 12-14 kDa	

Applications

Tested Applications: WB, IF/ICC, ELISA	Positive Controls: WB : PC-12 cells, BxPC-3 cells, HeLa cells, HepG2 cells, NIH/3T3 cells IF/ICC : HeLa cells,
Cited Applications: WB	
Species Specificity: human, mouse, rat	
Cited Species: human, mouse	

Background Information

RPL36, also named as 60S ribosomal protein L36, is a 105 amino acid protein, which is a component of the large ribosomal subunit. RPL36 may be involved in the early stage of hepatocarcinogenesis, and it can be used as an independent and potential prognostic marker for resected HCC.

Notable Publications

Author	Pubmed ID	Journal	Application
Xueju Wei	35927451	Nat Cell Biol	WB
Jingming Ren	37391878	J Pineal Res	WB

Storage

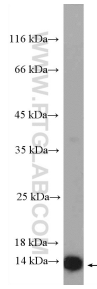
Storage:
Store at -20°C. Stable for one year after shipment.
Storage Buffer:
PBS with 0.02% sodium azide and 50% glycerol pH 7.3.
Aliquoting is unnecessary for -20°C storage

*** 20ul sizes contain 0.1% BSA

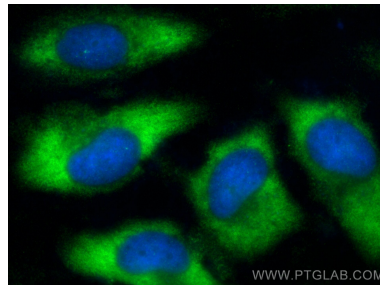
For technical support and original validation data for this product please contact:
T: 1 (888) 4PTGLAB (1-888-478-4522) (toll free in USA), or 1(312) 455-8498 (outside USA)
E: proteintech@ptglab.com
W: ptglab.com

This product is exclusively available under Proteintech Group brand and is not available to purchase from any other manufacturer.

Selected Validation Data



PC-12 cells were subjected to SDS PAGE followed by western blot with 15145-1-AP (RPL36 Antibody) at dilution of 1:600 incubated at room temperature for 1.5 hours.



Immunofluorescent analysis of (-20°C Ethanol) fixed HeLa cells using RPL36 antibody (15145-1-AP) at dilution of 1:400 and CoraLite® 488-Conjugated Goat Anti-Rabbit IgG(H+L) (SA00013-2).