

For Research Use Only

POLR3E Polyclonal antibody

Catalog Number: 15022-1-AP



Basic Information

Catalog Number: 15022-1-AP	GenBank Accession Number: BC000285	Purification Method: Antigen affinity purification
Size: 150ul , Concentration: 300 µg/ml by Nanodrop and 267 µg/ml by Bradford method using BSA as the standard;	GeneID (NCBI): 55718	Recommended Dilutions: WB 1:500-1:1000 IP 0.5-4.0 ug for IP and 1:200-1:1000 for WB
Source: Rabbit	Full Name: polymerase (RNA) III (DNA directed) polypeptide E (80kD)	
Isotype: IgG	Calculated MW: 80 kDa	
Immunogen Catalog Number: AG7098	Observed MW: 80 kDa	

Applications

Tested Applications: IP, WB, ELISA	Positive Controls:
Species Specificity: human, mouse, rat	WB : PC-3 cells, IP : PC-3 cells,

Background Information

Storage

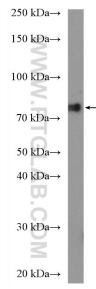
Storage:
Store at -20°C. Stable for one year after shipment.
Storage Buffer:
PBS with 0.02% sodium azide and 50% glycerol pH 7.3.
Aliquoting is unnecessary for -20°C storage

*** 20ul sizes contain 0.1% BSA

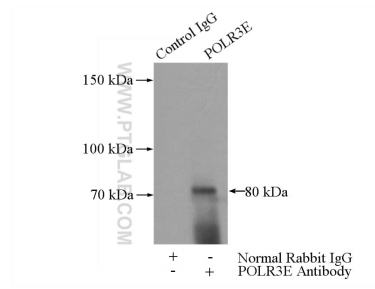
For technical support and original validation data for this product please contact:
T: 1 (888) 4PTGLAB (1-888-478-4522) (toll free in USA), or 1(312) 455-8498 (outside USA) E: proteintech@ptglab.com W: ptglab.com

This product is exclusively available under Proteintech Group brand and is not available to purchase from any other manufacturer.

Selected Validation Data



PC-3 cells were subjected to SDS PAGE followed by western blot with 15022-1-AP (POLR3E antibody) at dilution of 1:600 incubated at room temperature for 1.5 hours.



IP Result of anti-POLR3E (IP:15022-1-AP, 5ug; Detection:15022-1-AP 1:300) with PC-3 cells lysate 3200ug.