

For Research Use Only

# VPS36 Polyclonal antibody

Catalog Number: 14262-1-AP

2 Publications



## Basic Information

<b>Catalog Number:</b> 14262-1-AP	<b>GenBank Accession Number:</b> BC050439	<b>Purification Method:</b> Antigen affinity purification
<b>Size:</b> 150ul , Concentration: 450 ug/ml by Nanodrop and 267 ug/ml by Bradford method using BSA as the standard;	<b>GeneID (NCBI):</b> 51028	<b>Recommended Dilutions:</b> WB 1:200-1:1000 IHC 1:250-1:1000
<b>Source:</b> Rabbit	<b>UNIPROT ID:</b> Q86VN1	
<b>Isotype:</b> IgG	<b>Full Name:</b> vacuolar protein sorting 36 homolog (S. cerevisiae)	
<b>Immunogen Catalog Number:</b> AG5549	<b>Calculated MW:</b> 44 kDa	
	<b>Observed MW:</b> 43 kDa, 65 kDa	

## Applications

<b>Tested Applications:</b> WB, IHC, ELISA	<b>Positive Controls:</b> WB : HL-60 cells, IHC : human pancreas cancer tissue, human intrahepatic cholangiocarcinoma tissue
<b>Cited Applications:</b> WB	
<b>Species Specificity:</b> human	
<b>Cited Species:</b> human	
<b>Note-IHC: suggested antigen retrieval with TE buffer pH 9.0; (*) Alternatively, antigen retrieval may be performed with citrate buffer pH 6.0</b>	

## Notable Publications

Author	Pubmed ID	Journal	Application
Ying Li	28370415	J Neurosci Res	
Hui-Yung Song	30965672	Cells	WB

## Storage

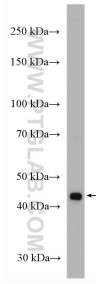
**Storage:**  
Store at -20°C. Stable for one year after shipment.  
**Storage Buffer:**  
PBS with 0.02% sodium azide and 50% glycerol pH 7.3.  
Aliquoting is unnecessary for -20°C storage

\*\*\* 20ul sizes contain 0.1% BSA

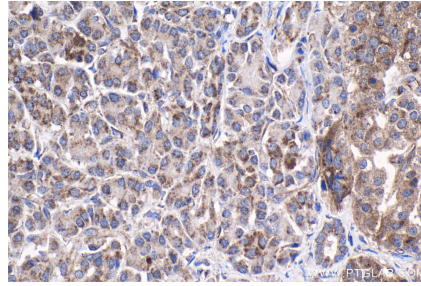
For technical support and original validation data for this product please contact:  
T: 1 (888) 4PTGLAB (1-888-478-4522) (toll free in USA), or 1(312) 455-8498 (outside USA)  
E: proteintech@ptglab.com  
W: ptglab.com

This product is exclusively available under Proteintech Group brand and is not available to purchase from any other manufacturer.

## Selected Validation Data



HL-60 cells were subjected to SDS PAGE followed by western blot with 14262-1-AP (VPS36 antibody) at dilution of 1:300 incubated at room temperature for 1.5 hours.



Immunohistochemical analysis of paraffin-embedded human pancreas cancer tissue slide using 14262-1-AP (VPS36 antibody) at dilution of 1:500 (under 40x lens). Heat mediated antigen retrieval with Tris-EDTA buffer (pH 9.0).