

For Research Use Only

# SEPHS2 Polyclonal antibody

Catalog Number: 14109-1-AP **2 Publications**



## Basic Information

<b>Catalog Number:</b> 14109-1-AP	<b>GenBank Accession Number:</b> BC016643	<b>Purification Method:</b> Antigen affinity purification
<b>Size:</b> 150ul , Concentration: 500 µg/ml by Nanodrop;	<b>GeneID (NCBI):</b> 22928	<b>Recommended Dilutions:</b> WB 1:1000-1:4000 IHC 1:50-1:500
<b>Source:</b> Rabbit	<b>UNIPROT ID:</b> Q99611	
<b>Isotype:</b> IgG	<b>Full Name:</b> selenophosphate synthetase 2	
<b>Immunogen Catalog Number:</b> AG5255	<b>Calculated MW:</b> 47 kDa	
	<b>Observed MW:</b> 47-50 kDa	

## Applications

<b>Tested Applications:</b> WB, IHC, ELISA	<b>Positive Controls:</b>
<b>Cited Applications:</b> WB, IHC	<b>WB :</b> NCI-H1299 cells, mouse pancreas tissue, mouse adipose tissue, rat liver tissue
<b>Species Specificity:</b> human, mouse, rat	<b>IHC :</b> human breast cancer tissue, human liver cancer tissue, mouse pancreas tissue
<b>Cited Species:</b> human, mouse	
<b>Note-IHC: suggested antigen retrieval with TE buffer pH 9.0; (*) Alternatively, antigen retrieval may be performed with citrate buffer pH 6.0</b>	

## Notable Publications

Author	Pubmed ID	Journal	Application
Hiroaki Fujita	38867112	Nat Struct Mol Biol	WB
Fengyan Wang	37293295	Front Med (Lausanne)	IHC

## Storage

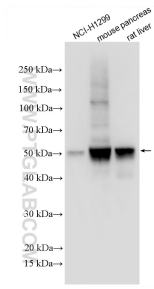
**Storage:**  
Store at -20°C. Stable for one year after shipment.  
**Storage Buffer:**  
PBS with 0.02% sodium azide and 50% glycerol pH 7.3.  
Aliquoting is unnecessary for -20°C storage

\*\*\* 20ul sizes contain 0.1% BSA

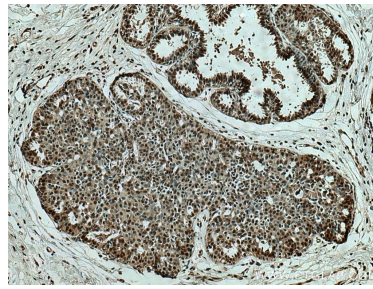
For technical support and original validation data for this product please contact:  
T: 1 (888) 4PTGLAB (1-888-478-4522) (toll free in USA), or 1(312) 455-8498 (outside USA)      E: proteintech@ptglab.com  
W: ptglab.com

This product is exclusively available under Proteintech Group brand and is not available to purchase from any other manufacturer.

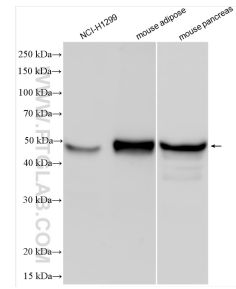
## Selected Validation Data



Various lysates were subjected to SDS PAGE followed by western blot with 14109-1-AP (SEPHS2 antibody) at dilution of 1:2000 incubated at room temperature for 1.5 hours.



Immunohistochemical analysis of paraffin-embedded human breast cancer tissue slide using 14109-1-AP (SEPHS2 antibody) at dilution of 1:200 (under 10x lens). Heat mediated antigen retrieval with Tris-EDTA buffer (pH 9.0).



Various lysates were subjected to SDS PAGE followed by western blot with 14109-1-AP (SEPHS2 antibody) at dilution of 1:4000 incubated at room temperature for 1.5 hours.