

For Research Use Only

IZUMO1 Polyclonal antibody

Catalog Number: 13296-1-AP



Basic Information

Catalog Number: 13296-1-AP	GenBank Accession Number: BC034769	Purification Method: Antigen affinity purification
Size: 150ul , Concentration: 493 µg/ml by Bradford method using BSA as the standard;	GeneID (NCBI): 284359	Recommended Dilutions: WB 1:500-1:1000 IHC 1:50-1:500 IF 1:50-1:500
Source: Rabbit	Full Name: izumo sperm-egg fusion 1	
Isotype: IgG	Calculated MW: 350 aa, 39 kDa	
Immunogen Catalog Number: AG4008	Observed MW: 56 kDa	

Applications

Tested Applications: IF, IHC, WB, ELISA	Positive Controls:
Species Specificity: human, mouse	WB : mouse testis tissue,
Note-IHC: suggested antigen retrieval with TE buffer pH 9.0; (*) Alternatively, antigen retrieval may be performed with citrate buffer pH 6.0	IHC : human testis tissue,
	IF : mouse testis tissue,

Background Information

IZUMO1, also named as OBF, is a sperm-specific protein. It is a novel member of the immunoglobulin superfamily located on sperm and is indispensable for sperm-egg fusion. For mouse Izumo1, the MW is about 56 kDa. For human IZUMO1, the MW is about 37-40 kDa in WB detection.

Storage

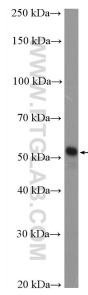
Storage:
Store at -20°C. Stable for one year after shipment.
Storage Buffer:
PBS with 0.02% sodium azide and 50% glycerol pH 7.3.
Aliquoting is unnecessary for -20°C storage

*** 20ul sizes contain 0.1% BSA

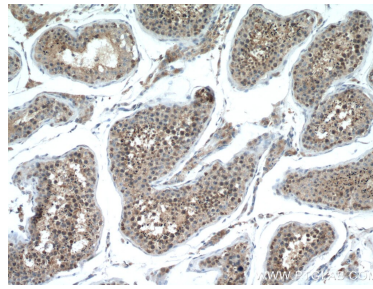
For technical support and original validation data for this product please contact:
T: 1 (888) 4PTGLAB (1-888-478-4522) (toll free in USA), or 1(312) 455-8498 (outside USA)
E: proteintech@ptglab.com
W: ptglab.com

This product is exclusively available under Proteintech Group brand and is not available to purchase from any other manufacturer.

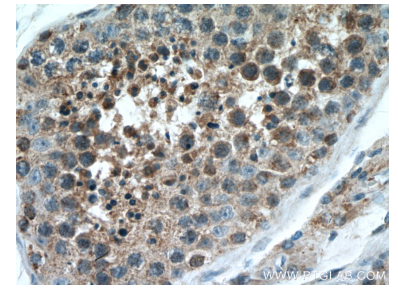
Selected Validation Data



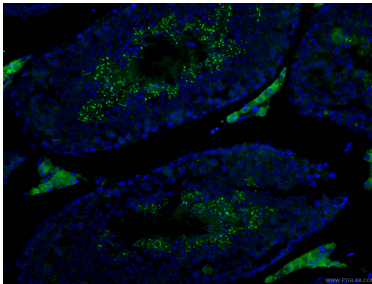
mouse testis tissue were subjected to SDS PAGE followed by western blot with 13296-1-AP (IZUMO1 antibody) at dilution of 1:500 incubated at room temperature for 1.5 hours.



Immunohistochemical analysis of paraffin-embedded human testis tissue slide using 13296-1-AP (IZUMO1 antibody) at dilution of 1:200 (under 10x lens. Heat mediated antigen retrieval with Tris-EDTA buffer (pH 9.0).



Immunohistochemical analysis of paraffin-embedded human testis tissue slide using 13296-1-AP (IZUMO1 antibody) at dilution of 1:200 (under 40x lens. Heat mediated antigen retrieval with Tris-EDTA buffer (pH 9.0).



Immunofluorescent analysis of (4% PFA) fixed mouse testis tissue using 13296-1-AP (IZUMO1 antibody), at dilution of 1:100 and CoraLite®488-Conjugated AffiniPure Goat Anti-Rabbit IgG(H+L).