

For Research Use Only

TIN2 Polyclonal antibody

Catalog Number: 11368-1-AP **4 Publications**



Basic Information

Catalog Number: 11368-1-AP	GenBank Accession Number: BC005030	Purification Method: Antigen affinity purification
Size: 150ul, Concentration: 800 µg/ml by Nanodrop and 387 µg/ml by Bradford method using BSA as the standard;	GeneID (NCBI): 26277	Recommended Dilutions: WB 1:500-1:1000 IF 1:10-1:100
Source: Rabbit	UNIPROT ID: Q9BSI4	
Isotype: IgG	Full Name: TERF1 (TRF1)-interacting nuclear factor 2	
Immunogen Catalog Number: AG1922	Calculated MW: 451 aa, 50 kDa	
	Observed MW: 50 kDa, 40 kDa	

Applications

Tested Applications: WB, IF, ELISA	Positive Controls: WB : mouse spleen tissue, IF : HepG2 cells,
Cited Applications: WB, chip	
Species Specificity: human, mouse	
Cited Species: human, mouse	

Background Information

TIN2, also named as TIN2, is a component of the shelterin complex (telosome) that is involved in the regulation of telomere length and protection. TIN2 has some isoforms with MW 50 kDa (TIN2L), 40 kDa (TIN2S) and 13 kDa. This antibody detects TIN2L, TIN2S and the shelterin complex.

Notable Publications

Author	Pubmed ID	Journal	Application
Orit Uziel	26515461	Oncotarget	chip
Tomer Harpaz	30326633	Cells	
Athanasios Siametis	38744897	Nat Commun	WB,ChIP

Storage

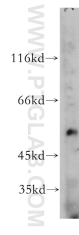
Storage:
Store at -20°C. Stable for one year after shipment.
Storage Buffer:
PBS with 0.02% sodium azide and 50% glycerol pH 7.3.
Aliquoting is unnecessary for -20°C storage

*** 20ul sizes contain 0.1% BSA

For technical support and original validation data for this product please contact:
T: 1 (888) 4PTGLAB (1-888-478-4522) (toll free in USA), or 1(312) 455-8498 (outside USA)
E: proteintech@ptglab.com
W: ptglab.com

This product is exclusively available under Proteintech Group brand and is not available to purchase from any other manufacturer.

Selected Validation Data



mouse spleen tissue were subjected to SDS PAGE followed by western blot with 11368-1-AP (TIN2 antibody) at dilution of 1:200 incubated at room temperature for 1.5 hours.



Immunofluorescent analysis of HepG2 cells, using TIN2 antibody 11368-1-AP at 1:25 dilution and Rhodamine-labeled goat anti-rabbit IgG (red).