

For Research Use Only

EEFSEC Polyclonal antibody

Catalog Number: 10628-1-AP **1 Publications**



Basic Information

Catalog Number: 10628-1-AP	GenBank Accession Number: BC007933	Purification Method: Antigen affinity purification
Size: 150ul , Concentration: 350 µg/ml by Nanodrop;	GeneID (NCBI): 60678	Recommended Dilutions: WB 1:1000-1:6000 IHC 1:50-1:500
Source: Rabbit	Full Name: eukaryotic elongation factor, selenocysteine-tRNA-specific	
Isotype: IgG	Calculated MW: 63 kDa	
Immunogen Catalog Number: AG0980	Observed MW: 65 kDa	

Applications

Tested Applications: IHC, WB, ELISA	Positive Controls: WB : A549 cells, A431 cells, HEK-293 cells, Jurkat cells, HepG2 cells IHC : human kidney tissue, human stomach tissue
Cited Applications: WB	
Species Specificity: human	
Cited Species: human	

Note-IHC: suggested antigen retrieval with TE buffer pH 9.0; (*) Alternatively, antigen retrieval may be performed with citrate buffer pH 6.0

Background Information

The amino acid selenocysteine (Sec) is incorporated into a small group of proteins that are involved in preventing cellular oxidative stress. The Sec-specific elongation factor eEFec delivers the aminoacylated selenocysteine-tRNA (Sec-tRNA^{Sec}) to the ribosome and suppresses UGA codons that are upstream of Sec Insertion Sequence (SECIS) elements bound by SECIS binding protein 2 (SBP2)[PMID:22992746]. It probably replaces EF-Tu for the insertion of selenocysteine directed by the UGA codon.

Notable Publications

Author	Pubmed ID	Journal	Application
Nina Zeng	33471625	Am J Physiol Cell Physiol	WB

Storage

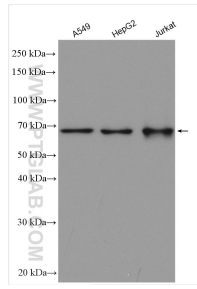
Storage:
Store at -20°C. Stable for one year after shipment.
Storage Buffer:
PBS with 0.02% sodium azide and 50% glycerol pH 7.3.
Aliquoting is unnecessary for -20°C storage

*** 20ul sizes contain 0.1% BSA

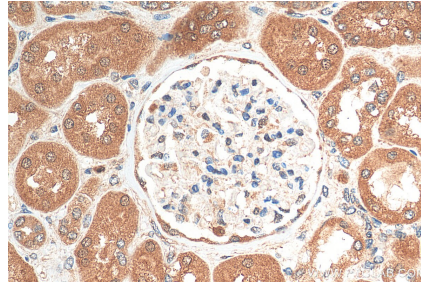
For technical support and original validation data for this product please contact:
T: 1 (888) 4PTGLAB (1-888-478-4522) (toll free in USA), or 1(312) 455-8498 (outside USA)
E: proteintech@ptglab.com
W: ptglab.com

This product is exclusively available under Proteintech Group brand and is not available to purchase from any other manufacturer.

Selected Validation Data



Various lysates were subjected to SDS PAGE followed by western blot with 10628-1-AP (EEFSEC antibody) at dilution of 1:3000 incubated at room temperature for 1.5 hours.



Immunohistochemical analysis of paraffin-embedded human kidney tissue slide using 10628-1-AP (EEFSEC antibody) at dilution of 1:200 (under 40x lens). Heat mediated antigen retrieval with Tris-EDTA buffer (pH 9.0).