

For Research Use Only

# Beta Tubulin Polyclonal antibody

Catalog Number: 10094-1-AP **980 Publications**



## Basic Information

<b>Catalog Number:</b> 10094-1-AP	<b>GenBank Accession Number:</b> BC000748	<b>Purification Method:</b> Antigen affinity purification
<b>Size:</b> 150ul , Concentration: 600 ug/ml by Nanodrop;	<b>GeneID (NCBI):</b> 10381	<b>Recommended Dilutions:</b> WB 1:2000-1:12000
<b>Source:</b> Rabbit	<b>UNIPROT ID:</b> Q13509	IP 0.5-4.0 ug for 1.0-3.0 mg of total protein lysate
<b>Isotype:</b> IgG	<b>Full Name:</b> tubulin, beta 3	IHC 1:50-1:500
<b>Immunogen Catalog Number:</b> AG0136	<b>Calculated MW:</b> 50 kDa	IF-P 1:50-1:500
	<b>Observed MW:</b> 50-55 kDa	IF/ICC 1:200-1:800

## Applications

<b>Tested Applications:</b> WB, IHC, IF/ICC, IF-P, FC (Intra), IP, ELISA	<b>Positive Controls:</b> WB : U-251 cells, mouse kidney tissue, HEK-293 cells, rat kidney tissue, mouse brain tissue, rat brain tissue
<b>Cited Applications:</b> WB, IHC, IF, IP, CoIP	IP : mouse brain tissue,
<b>Species Specificity:</b> human, mouse, rat	IHC : human colon tissue, human cerebellum tissue, mouse brain tissue, rat testis tissue
<b>Cited Species:</b> human, mouse, rat, rabbit, chicken, zebrafish, hamster, sheep, goat, fish	IF-P : mouse eye tissue,
<b>Note-IHC: suggested antigen retrieval with TE buffer pH 9.0; (*) Alternatively, antigen retrieval may be performed with citrate buffer pH 6.0</b>	IF/ICC : HeLa cells, HepG2 cells

## Background Information

There are five tubulins in human cells: alpha, beta, gamma, delta, and epsilon. Tubulins are conserved across species. They form heterodimers, which multimerize to form a microtubule filament. An alpha and beta tubulin heterodimer is the basic structural unit of microtubules. The heterodimer does not come apart, once formed. The alpha and beta tubulins, which are each about 55 kDa MW, are homologous but not identical. Alpha, beta, and gamma tubulins have all been used as loading controls. Tubulin expression may vary according to resistance to antimicrobial and antimetabolic drugs.

## Notable Publications

Author	Pubmed ID	Journal	Application
Shasha Nie	36231051	Cells	WB
Yu Wang	34658758	Front Neurosci	WB
Xudong Zhu	33162805	Int J Med Sci	WB

## Storage

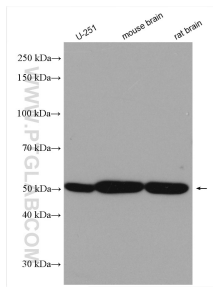
**Storage:**  
Store at -20°C. Stable for one year after shipment.  
**Storage Buffer:**  
PBS with 0.02% sodium azide and 50% glycerol, pH7.3  
Aliquoting is unnecessary for -20°C storage

\*\*\* 20ul sizes contain 0.1% BSA

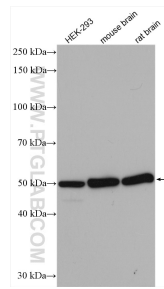
For technical support and original validation data for this product please contact:  
T: 1 (888) 4PTGLAB (1-888-478-4522) (toll free in USA), or 1(312) 455-8498 (outside USA)  
E: proteintech@ptglab.com  
W: ptglab.com

This product is exclusively available under Proteintech Group brand and is not available to purchase from any other manufacturer.

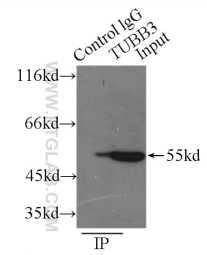
## Selected Validation Data



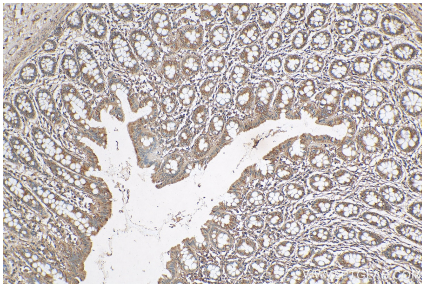
Various lysates were subjected to SDS PAGE followed by western blot with 10094-1-AP (Beta Tubulin antibody) at dilution of 1:6000 incubated at room temperature for 1.5 hours.



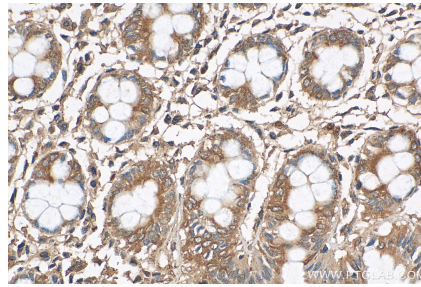
Various lysates were subjected to SDS PAGE followed by western blot with 10094-1-AP (beta Tubulin antibody) at dilution of 1:2500 incubated at room temperature for 1.5 hours.



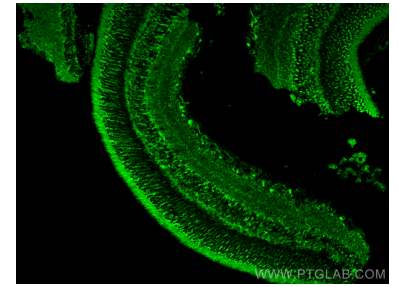
IP result of anti-Beta Tubulin (IP:10094-1-AP, 3ug; Detection:10094-1-AP 1:1000) with mouse brain tissue lysate 7500ug.



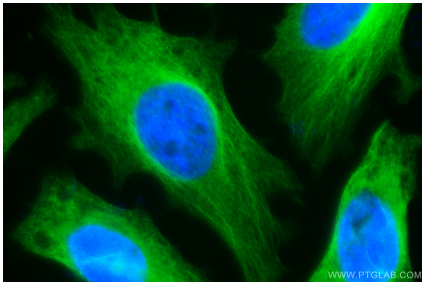
Immunohistochemical analysis of paraffin-embedded human colon tissue slide using 10094-1-AP (Beta Tubulin antibody) at dilution of 1:200 (under 10x lens). Heat mediated antigen retrieval with Tris-EDTA buffer (pH 9.0).



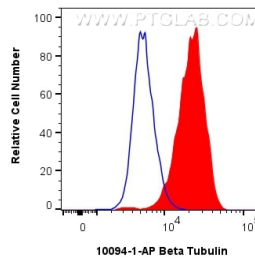
Immunohistochemical analysis of paraffin-embedded human colon tissue slide using 10094-1-AP (Beta Tubulin antibody) at dilution of 1:200 (under 40x lens). Heat mediated antigen retrieval with Tris-EDTA buffer (pH 9.0).



Immunofluorescent analysis of (4% PFA) fixed paraffin-embedded mouse eye tissue using Beta Tubulin antibody (10094-1-AP) at dilution of 1:200 and CoraLite®488-Conjugated Goat Anti-Rabbit IgG(H+L) (SA00013-2). Heat mediated antigen retrieval with Tris-EDTA buffer (pH 9.0).



Immunofluorescent analysis of (4% PFA) fixed HeLa cells using Beta Tubulin antibody (10094-1-AP) at dilution of 1:400 and CoraLite®488-Conjugated AffiniPure Goat Anti-Rabbit IgG(H+L) (SA00013-2).



$1 \times 10^6$  HepG2 cells were intracellularly stained with 0.25 ug Beta Tubulin Polyclonal antibody (10094-1-AP) and CoraLite®488-Conjugated Goat Anti-Rabbit IgG(H+L) (SA00013-2)(red), or 0.25 ug Rabbit IgG control Rabbit PolyAb (30000-0-AP) (blue). Cells were fixed with 4% PFA and permeabilized with Flow Cytometry Perm Buffer (PF00011-C).