

For Research Use Only

# PE Anti-Human CD314 (1D11)

Catalog Number: PE-65188



## Basic Information

**Catalog Number:**  
PE-65188

**Size:**  
100tests, 10 µl/test

**Source:**  
Mouse

**Isotype:**  
Mouse IgG1 kappa

**GenBank Accession Number:**  
BC039836

**GeneID (NCBI):**  
22914

**Full Name:**  
killer cell lectin-like receptor  
subfamily K, member 1

**Calculated MW:**  
25 kDa

**Purification Method:**

The purified antibody is conjugated with R-phycoerythrin (PE) under optimum conditions. The conjugate is purified by size-exclusion chromatography.

**CloneNo.:**  
1D11

**Excitation/Emission maxima wavelengths:**  
496 nm, 565 nm / 578 nm

## Applications

**Tested Applications:**  
FC

**Species Specificity:**  
Human

## Background Information

### Storage

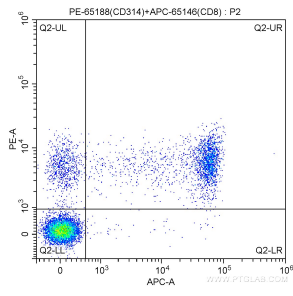
**Storage:**  
Store at 2-8°C. Avoid exposure to light.

**Storage Buffer:**  
PBS with 0.1% sodium azide.

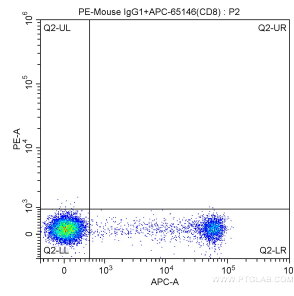
For technical support and original validation data for this product please contact:  
T: 1 (888) 4PTGLAB (1-888-478-4522) (toll free in USA), or 1(312) 455-8498 (outside USA)      E: proteintech@ptglab.com  
W: ptglab.com

**This product is exclusively available under Proteintech Group brand and is not available to purchase from any other manufacturer.**

## Selected Validation Data



1X10<sup>6</sup> human peripheral blood lymphocytes were surface stained with APC Anti-Human CD8 (APC-65146, Clone: SK1) and 10 ul PE Anti-Human CD314 (PE-65188, Clone: 1D11). Cells were not fixed.



1X10<sup>6</sup> human peripheral blood lymphocytes were surface stained with APC Anti-Human CD8 (APC-65146, Clone: SK1) and PE-Mouse IgG1 isotype control. Cells were not fixed.