

For Research Use Only

# Cardinal Red™ Anti-Human CD31 (WM-59)



Catalog Number: CR-65268

## Basic Information

|                                      |  |   |
|--------------------------------------|--|---|
| <b>Catalog Number:</b><br>CR-65268   | <b>GenBank Accession Number:</b><br>BC022512                     | <b>Purification Method:</b><br>Affinity purification              |
| <b>Size:</b><br>100tests , 5 µl/test | <b>GeneID (NCBI):</b><br>5175                                    | <b>CloneNo.:</b><br>WM-59   |
| <b>Source:</b><br>Mouse              | <b>Full Name:</b><br>platelet/endothelial cell adhesion molecule | <b>Excitation/Emission maxima wavelengths:</b><br>592 nm / 611 nm |
| <b>Isotype:</b><br>IgG1, kappa       | <b>Calculated MW:</b><br>83 kDa                                  |   |

## Applications

**Tested Applications:**  
FC

**Species Specificity:**  
Human

## Background Information

CD31, also known as PECAM1 (Platelet endothelial cell adhesion molecule), is a member of the immunoglobulin gene superfamily of cell adhesion molecules. CD31 is a transmembrane glycoprotein that is highly expressed on the surface of the endothelium, making up a large portion of its intracellular junctions. It is also present on the surface of hematopoietic cells and immune cells including platelets, monocytes, neutrophils, natural killer cells, megakaryocytes and some types of T-cell (PMID: 9011572). As well as its role in cell-cell adhesion, CD31 functions as a signaling receptor, and is involved in important physiological events such as nitric oxide production, regulation of T-cell immunity and tolerance, leukocyte transendothelial migration and inflammation and angiogenesis (PMID: 21183735; 20978210; 17872453; 20634489).

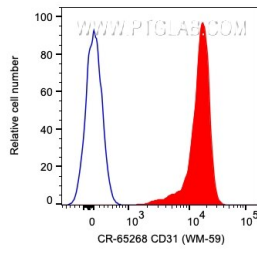
## Storage

**Storage:**  
Store at 2-8°C. Avoid exposure to light. Stable for one year after shipment.  
**Storage Buffer:**  
PBS with 0.09% sodium azide and 0.5% BSA.

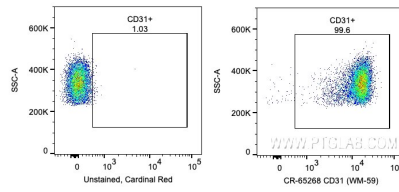
For technical support and original validation data for this product please contact:  
T: 1 (888) 4PTGLAB (1-888-478-4522) (toll free in USA), or 1(312) 455-8498 (outside USA) E: proteintech@ptglab.com W: ptglab.com

This product is exclusively available under Proteintech Group brand and is not available to purchase from any other manufacturer.

## Selected Validation Data



1X10<sup>6</sup> human PBMCs were surface stained with 5 ul Cardinal Red™ Anti-Human CD31 (CR-65268, Clone:WM-59) (red) or unstained. Cells were not fixed. Monocytes were gated.



1X10<sup>6</sup> human PBMCs were surface stained with 5 ul Cardinal Red™ Anti-Human CD31 (CR-65268, Clone:WM-59) or unstained. Cells were not fixed. Monocytes were gated.