

For Research Use Only

# Cardinal Red™ Anti-Human CD29 (TS2/16)



Catalog Number: CR-65191

## Basic Information

<b>Catalog Number:</b> CR-65191	<b>GenBank Accession Number:</b> BC020057	<b>Purification Method:</b> Protein G purification
<b>Size:</b> 100tests , 5 µl/test	<b>GeneID (NCBI):</b> 3688	<b>CloneNo.:</b> TS2/16
<b>Source:</b> Mouse	<b>Full Name:</b> integrin, beta 1 (fibronectin receptor, beta polypeptide, antigen CD29 includes MDF2, MSK12)	<b>Excitation/Emission maxima wavelengths:</b> 592 nm / 611 nm
<b>Isotype:</b> IgG1, kappa	<b>Calculated MW:</b> 88 kDa	

## Applications

**Tested Applications:**  
FC

**Species Specificity:**  
Human

## Background Information

Integrin beta-1 (ITGB1), also named as CD29, is a 130 kDa single chain type I glycoprotein that is expressed in a heterodimeric complex with one of six distinct  $\alpha$  subunits, comprising the very late activation antigen (VLA) subfamily of adhesion receptors. It is one of the essential surface molecules expressed on human MSC from bone marrow and other sources. The  $\beta$ 1 subunit is also broadly expressed on lymphocytes and monocytes, weakly expressed on granulocytes, and not expressed on erythrocytes. These receptors are involved in a variety of cell-cell and cell-matrix interactions.

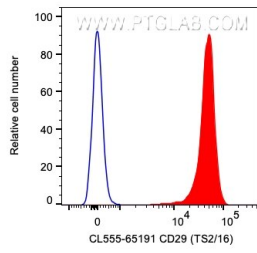
## Storage

**Storage:**  
Store at 2-8°C. Avoid exposure to light. Stable for one year after shipment.  
**Storage Buffer:**  
PBS with 0.09% sodium azide and 0.5% BSA.

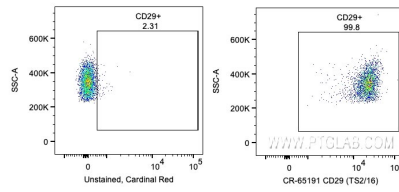
For technical support and original validation data for this product please contact:  
T: 1 (888) 4PTGLAB (1-888-478-4522) (toll free in USA), or 1(312) 455-8498 (outside USA)      E: proteintech@ptglab.com  
W: ptglab.com

This product is exclusively available under Proteintech Group brand and is not available to purchase from any other manufacturer.

## Selected Validation Data



1X10<sup>6</sup> human PBMCs were surface stained with 5 ul Cardinal Red™ Anti-Human CD29 (CR-65191, Clone:TS2/16) (red) or unstained. Cells were not fixed. Monocytes were gated.



1X10<sup>6</sup> human PBMCs were surface stained with 5 ul Cardinal Red™ Anti-Human CD29 (CR-65191, Clone:TS2/16) or unstained. Cells were not fixed. Monocytes were gated.