

For Research Use Only

Cardinal Red™ Anti-Human CD8a (OKT8)



Catalog Number: **CR-65135**

Basic Information

Catalog Number: CR-65135	GenBank Accession Number: BC025715	Purification Method: Affinity purification
Size: 100tests , 5 ul/test	GeneID (NCBI): 925	CloneNo.: OKT8
Source: Mouse	Full Name: CD8a molecule	Excitation/Emission maxima wavelengths: 592 nm / 611 nm
Isotype: IgG2a, kappa	Calculated MW: 235 aa, 26 kDa	

Applications

Tested Applications:
FC

Species Specificity:
Human

Background Information

CD8 is a transmembrane glycoprotein composed of two disulfide-linked chains. It can be present as a homodimer of CD8a or as a heterodimer of CD8a and CD8β (PMID: 3264320; 8253791). CD8 is found on most thymocytes. The majority of class I-restricted T cells express mostly the CD8aβ heterodimer while CD8aa homodimers alone have been found on some gut intraepithelial T cells, on some T cell receptor (TCR) γδ T cells and on NK cells (PMID: 2111591; 1831127; 8420975). CD8 acts as a co-receptor that binds to MHC class-I and participates in cytotoxic T cell activation (PMID: 8499079). During T cell development, CD8 is required for positive selection of CD4-/CD8+ T cells (PMID: 1968084).

Storage

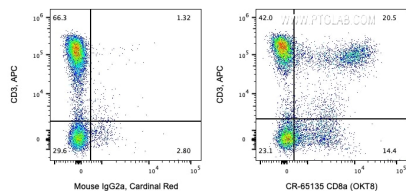
Storage:
Store at 2-8°C. Avoid exposure to light. Stable for one year after shipment.

Storage Buffer:
PBS with 0.09% sodium azide and 0.5% BSA.

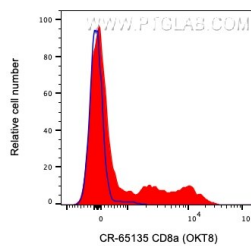
For technical support and original validation data for this product please contact:
T: 1 (888) 4PTGLAB (1-888-478-4522) (toll free in USA), or 1(312) 455-8498 (outside USA)
E: proteintech@ptglab.com
W: ptglab.com

This product is exclusively available under Proteintech Group brand and is not available to purchase from any other manufacturer.

Selected Validation Data



1X10⁶ human PBMCs were surface co-stained with APC Anti-Human CD3 and 5 ul Cardinal Red™ Anti-Human CD8a (CR-65135, Clone:OKT8) or Mouse IgG2a Isotype Control. Cells were not fixed. Lymphocytes were gated.



1X10⁶ human PBMCs were surface stained with 5 ul Cardinal Red™ Anti-Human CD8a (CR-65135, Clone:OKT8) (red) or Mouse IgG2a Isotype Control. Cells were not fixed. Lymphocytes were gated.