

For Research Use Only

# Cardinal Red™ Anti-Human CD45 (HI30)



Catalog Number: **CR-65109**

## Basic Information

<b>Catalog Number:</b> CR-65109	<b>GenBank Accession Number:</b> BC014239	<b>Purification Method:</b> Affinity purification
<b>Size:</b> 100tests , 5 ul/test	<b>GeneID (NCBI):</b> 5788	<b>CloneNo.:</b> HI30
<b>Source:</b> Mouse	<b>Full Name:</b> protein tyrosine phosphatase, receptor type, C	<b>Excitation/Emission maxima wavelengths:</b> 592 nm / 611 nm
<b>Isotype:</b> IgG1, kappa		

## Applications

**Tested Applications:**  
FC

**Species Specificity:**  
Human

## Background Information

CD45, also known as protein tyrosine phosphatase, receptor type C, is a type I transmembrane protein expressed on the surface of all haematopoietic cells with the exception of erythrocytes and platelets (PMID: 3489673; 28615666). CD45 is a pan-haematopoietic cell marker and has been shown to be essential for T- and B-cell activation and signalling (PMID: 9429890; 16378097).

## Storage

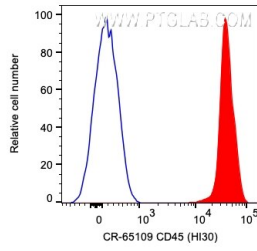
**Storage:**  
Store at 2-8°C. Avoid exposure to light. Stable for one year after shipment.

**Storage Buffer:**  
PBS with 0.09% sodium azide and 0.5% BSA.

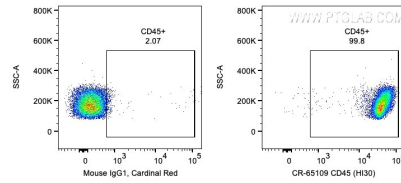
For technical support and original validation data for this product please contact:  
T: 1 (888) 4PTGLAB (1-888-478-4522) (toll free in USA), or 1(312) 455-8498 (outside USA)      E: [proteintech@ptglab.com](mailto:proteintech@ptglab.com)  
W: [ptglab.com](http://ptglab.com)

**This product is exclusively available under Proteintech Group brand and is not available to purchase from any other manufacturer.**

## Selected Validation Data



1X10<sup>6</sup> human PBMCs were surface stained with 5 ul Cardinal Red™ Anti-Human CD45 (CR-65109, Clone:HI30) (red) or Mouse IgG1 Isotype Control. Cells were not fixed. Lymphocytes were gated.



1X10<sup>6</sup> human PBMCs were surface stained with 5 ul Cardinal Red™ Anti-Human CD45 (CR-65109, Clone:HI30) or Mouse IgG1 Isotype Control. Cells were not fixed. Lymphocytes were gated.