

For Research Use Only

# CoraLite® Plus 750-conjugated c-Cbl Monoclonal antibody



Catalog Number: CL750-66576

Featured Product

## Basic Information

<b>Catalog Number:</b> CL750-66576	<b>GenBank Accession Number:</b> BC132733	<b>Purification Method:</b> Protein A purification
<b>Size:</b> 100ul , Concentration: 1000 µg/ml by Nanodrop;	<b>GeneID (NCBI):</b> 867	<b>CloneNo.:</b> 2F6D1
<b>Source:</b> Mouse	<b>Full Name:</b> Cas-Br-M (murine) ecotropic retroviral transforming sequence	<b>Recommended Dilutions:</b> WB 1:1000-1:4000
<b>Isotype:</b> IgG1	<b>Calculated MW:</b> 906 aa, 100 kDa	<b>Excitation/Emission maxima wavelengths:</b> 755 nm / 780 nm
<b>Immunogen Catalog Number:</b> AG23033	<b>Observed MW:</b> 100-120 kDa	

## Applications

<b>Tested Applications:</b> WB	<b>Positive Controls:</b> WB : Raji cells, mouse brain tissue, A431 cells
<b>Species Specificity:</b> Human, mouse	

## Background Information

c-Cbl (Casitas B-lineage lymphoma) is a critical regulator that controls immature or follicular helper T cell development, B cell development, immune tolerance, angiogenesis, or tumorigenesis (PMID: 33962939). c-Cbl also plays a pivotal role in regulating dendritic cell (DC) function via negatively modulating IL-12 production after Toll-like receptor (TLR) stimulation (PMID: 21799517).

## Storage

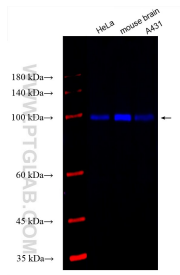
**Storage:**  
Store at -20°C. Avoid exposure to light. Stable for one year after shipment.  
**Storage Buffer:**  
PBS with 50% Glycerol, 0.05% Proclin300, 0.5% BSA, pH 7.3.  
Aliquoting is unnecessary for -20°C storage

\*\*\* 20ul sizes contain 0.1% BSA

For technical support and original validation data for this product please contact:  
T: 1 (888) 4PTGLAB (1-888-478-4522) (toll free in USA), or 1(312) 455-8498 (outside USA)  
E: proteintech@ptglab.com  
W: ptglab.com

This product is exclusively available under Proteintech Group brand and is not available to purchase from any other manufacturer.

## Selected Validation Data



Various lysates were subjected to SDS PAGE followed by western blot with CL750-66576 (c-Cbl antibody) at dilution of 1:2000 incubated at room temperature for 1.5 hours.