

For Research Use Only

CoraLite® Plus 750 Anti-Human CD31 (WM-59)



Catalog Number: CL750-65268

Basic Information

Catalog Number: CL750-65268	GenBank Accession Number: BC022512	Purification Method: Affinity purification
Size: 100tests , 5 µl/test	GeneID (NCBI): 5175	CloneNo.: WM-59
Source: Mouse	Full Name: platelet/endothelial cell adhesion molecule	Excitation/Emission maxima wavelengths: 755 nm / 780 nm
Isotype: IgG1, kappa	Calculated MW: 83 kDa	

Applications

Tested Applications:
FC

Species Specificity:
Human

Background Information

Storage

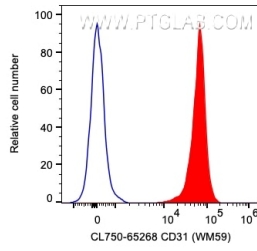
Storage:
Store at 2-8°C. Avoid exposure to light. Stable for one year after shipment.

Storage Buffer:
PBS with 0.09% sodium azide and 0.5% BSA.

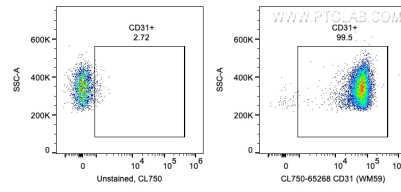
For technical support and original validation data for this product please contact:
T: 1 (888) 4PTGLAB (1-888-478-4522) (toll free in USA), or 1(312) 455-8498 (outside USA) E: proteintech@ptglab.com
W: ptglab.com

This product is exclusively available under Proteintech Group brand and is not available to purchase from any other manufacturer.

Selected Validation Data



1X10⁶ human PBMCs were surface stained with 5 ul CoraLite® Plus 750 Anti-Human CD31 (CL750-65268, Clone:WM-59) (red) or unstained. Cells were not fixed. Monocytes were gated.



1X10⁶ human PBMCs were surface stained with 5 ul CoraLite® Plus 750 Anti-Human CD31 (CL750-65268, Clone:WM-59) or unstained. Cells were not fixed. Monocytes were gated.