

For Research Use Only

# CoraLite® Plus 750 Anti-Human CD5 (UCHT2)



Catalog Number: **CL750-65152**

## Basic Information

<b>Catalog Number:</b> CL750-65152	<b>GenBank Accession Number:</b> BC027901	<b>Purification Method:</b> Affinity purification
<b>Size:</b> 100tests , 5 ul/test	<b>GeneID (NCBI):</b> 921	<b>CloneNo.:</b> UCHT2
<b>Source:</b> Mouse	<b>Full Name:</b> CD5 molecule	<b>Excitation/Emission maxima wavelengths:</b> 755 nm / 780 nm
<b>Isotype:</b> IgG1, kappa	<b>Calculated MW:</b> 495 aa, 55 kDa	

## Applications

**Tested Applications:**  
FC

**Species Specificity:**  
Human

## Background Information

CD5 is a type I transmembrane glycoprotein of the scavenger receptor cysteine-rich family (PMID: 12403363). CD5 is expressed on a majority of thymocytes, mature T cells, B cell subsets, and peripheral blood dendritic cells (PMID: 9858516; 6156984; 10379049; 1384337). CD5 may act as a receptor in regulating T-cell proliferation. It functions as a negative regulator of TCR signaling during thymocyte development (PMID: 7542801).

## Storage

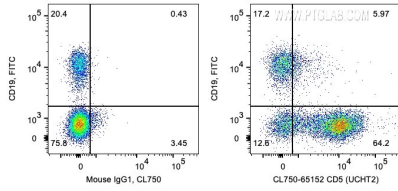
**Storage:**  
Store at 2-8°C. Avoid exposure to light. Stable for one year after shipment.

**Storage Buffer:**  
PBS with 0.09% sodium azide and 0.5% BSA.

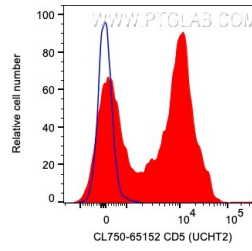
For technical support and original validation data for this product please contact:  
T: 1 (888) 4PTGLAB (1-888-478-4522) (toll free in USA), or 1(312) 455-8498 (outside USA)      E: [proteintech@ptglab.com](mailto:proteintech@ptglab.com)  
W: [ptglab.com](http://ptglab.com)

This product is exclusively available under Proteintech Group brand and is not available to purchase from any other manufacturer.

## Selected Validation Data



1X10<sup>6</sup> human PBMCs were surface co-stained with FITC Anti-Human CD19 and 5 ul CoraLite® Plus 750 Anti-Human CD5 (CL750-65152, Clone:UCHT2) or Mouse IgG1 Isotype Control. Cells were not fixed. Lymphocytes were gated.



1X10<sup>6</sup> human PBMCs were surface stained with 5 ul CoraLite® Plus 750 Anti-Human CD5 (CL750-65152, Clone:UCHT2) (red) or Mouse IgG1 Isotype Control. Cells were not fixed. Lymphocytes were gated.