

For Research Use Only

# CoraLite® Plus 647-conjugated MFG-E8 Monoclonal antibody



Catalog Number:CL647-67797

## Basic Information

<b>Catalog Number:</b> CL647-67797	<b>GenBank Accession Number:</b> BC003610	<b>Purification Method:</b> Protein A purification
<b>Size:</b> 100ul , Concentration: 1000 µg/ml by Nanodrop;	<b>GeneID (NCBI):</b> 4240	<b>CloneNo.:</b> 1A1A9
<b>Source:</b> Mouse	<b>Full Name:</b> milk fat globule-EGF factor 8 protein	
<b>Isotype:</b> IgG2b	<b>Calculated MW:</b> 43 kDa	
<b>Immunogen Catalog Number:</b> AG30666	<b>Observed MW:</b> 43 kDa	

## Applications

**Tested Applications:**  
FC (Intra)

**Species Specificity:**  
Human

## Background Information

Milk fat globule-epidermal growth factor-factor 8 (MFG-E8), also known as lactadherin, is a multifunctional secreted glycoprotein exhibiting versatile functions in cell physiology affecting health and diseases. It plays roles in clearance of apoptotic cells, anti-inflammatory, wound healing, arterial remodeling, angiogenesis, enhancing tumorigenicity and cancer metastasis (PMID: 23972256). MFG-E8 consists of two-repeated EGF-like domains, a mucin-like domain and two-repeated discoidin-like domains (C-domains), and contains an integrin-binding motif (RGD sequence) in the EGF-like domain (PMID: 11856354). It shows ubiquitous pattern of expression in various types of cells and tissues. Altered expression of MFG-E8 causes disruptions of homeostasis and is correlated with a number of diseases (PMID: 27429513).

## Storage

**Storage:**  
Store at -20°C. Avoid exposure to light. Stable for one year after shipment.

**Storage Buffer:**  
PBS with 50% Glycerol, 0.05% Proclin300, 0.5% BSA, pH 7.3.

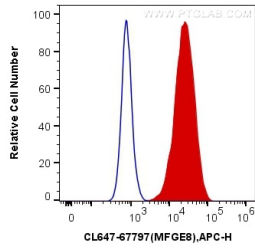
Aliquoting is unnecessary for -20°C storage

\*\*\* 20ul sizes contain 0.1% BSA

For technical support and original validation data for this product please contact:  
T: 1 (888) 4PTGLAB (1-888-478-4522) (toll free in USA), or 1(312) 455-8498 (outside USA)  
E: proteintech@ptglab.com  
W: ptglab.com

This product is exclusively available under Proteintech Group brand and is not available to purchase from any other manufacturer.

## Selected Validation Data



1X10<sup>6</sup> MDA-MB-231 cells were intracellularly stained with 0.4 ug CoraLite® Plus 647 Anti-Human MFGE8 (CL647-67797, Clone:1A1A9) (red), or 0.4 ug Control Antibody. Cells were fixed with 4% PFA and permeabilized with Flow Cytometry Perm Buffer (PF00011-C).