

For Research Use Only

CoraLite® Plus 647-conjugated WASF3 Monoclonal antibody



Catalog Number: CL647-67620

Basic Information

| | | |
|---|---|---|
| Catalog Number: CL647-67620 | GenBank Accession Number: BC050283 | Purification Method: Protein G purification |
| Size: 100ul , Concentration: 1000 µg/ml by Nanodrop; | GeneID (NCBI): 10810 | CloneNo.: 3B7D10 |
| Source: Mouse | Full Name: WAS protein family, member 3 | Recommended Dilutions: IF 1:50-1:500 |
| Isotype: IgG1 | Calculated MW: 55 kDa | Excitation/Emission maxima wavelengths: 654 nm / 674 nm |
| Immunogen Catalog Number: AG29991 | Observed MW: 50-55 and 66-70 kDa | |

Applications

| | |
|---|---|
| Tested Applications: IF | Positive Controls: IF : mouse brain tissue, |
| Species Specificity: Human, Mouse, Rat, Pig, Rabbit | |

Background Information

WASF3, also named as WAVE3 or SCAR3, belongs to the SCAR/WAVE family. It plays a role in the regulation of cell morphology and cytoskeletal organization. WASF3 is associated with the movement, invasion and metastasis in different cancers such as breast cancer, gastric cancer and prostate cancer. It has been shown that WASF3 levels are elevated in advanced stage cancers compared to lower grade tumors and normal tissue. 67620-1-Ig antibody recognizes 50-55 kDa and 66-70 kDa protein similar to the papers. (PMID: 21544801, 15826941, 31038356, 27432794, 31542393)

Storage

Storage:
Store at -20°C. Avoid exposure to light. Stable for one year after shipment.
Storage Buffer:
PBS with 50% Glycerol, 0.05% Proclin300, 0.5% BSA, pH 7.3.
Aliquoting is unnecessary for -20°C storage

*** 20ul sizes contain 0.1% BSA

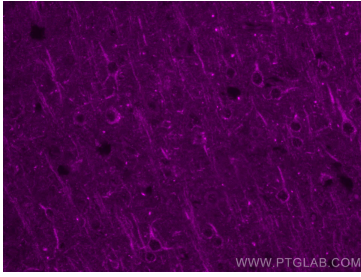
For technical support and original validation data for this product please contact:

T: 1 (888) 4PTGLAB (1-888-478-4522) (toll free
in USA), or 1(312) 455-8498 (outside USA)

E: proteintech@ptglab.com
W: ptglab.com

This product is exclusively available under Proteintech Group brand and is not available to purchase from any other manufacturer.

Selected Validation Data



Immunofluorescent analysis of (4% PFA) fixed mouse brain tissue using Coralite® Plus 647 WASF3 antibody (CL647-67620, Clone: 3B7D10) at dilution of 1:200.