

For Research Use Only

CoraLite® Plus 647-conjugated MCL1 Monoclonal antibody



Catalog Number: CL647-66026

Featured Product

Basic Information

Catalog Number: CL647-66026	GenBank Accession Number: BC107735	Purification Method: Protein A purification
Size: 100ul , Concentration: 1000 µg/ml by Nanodrop;	GeneID (NCBI): 4170	CloneNo.: 1E3C2
Source: Mouse	Full Name: myeloid cell leukemia sequence 1 (BCL2-related)	
Isotype: IgG2b	Calculated MW: 350 aa, 37 kDa	
Immunogen Catalog Number: AG10609		

Applications

Tested Applications:
FC (Intra)

Species Specificity:
human

Background Information

MCL-1 is an anti-apoptotic member of the Bcl-2 family originally isolated from the ML-1 human myeloid leukemia cell line. Similar to BCL2 and BCL2L1, MCL1 can interact with BAX and/or BAK1 to inhibit mitochondria-mediated apoptosis. Mcl-1 is critical for the proliferation and survival of myeloma cells in vitro, and overexpression of Mcl-1 protein in myeloma cells is associated with relapse and short event-free survival in multiple myeloma patients. Recent studies show that MCL-1 is upregulated in numerous haematological and solid tumour malignancies. Therefore, MCL-1 has been suggested as a potential new therapeutic target.

Storage

Storage:
Store at -20°C. Avoid exposure to light. Stable for one year after shipment.

Storage Buffer:
PBS with 50% Glycerol, 0.05% Proclin300, 0.5% BSA, pH 7.3.

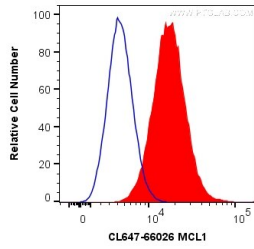
Aliquoting is unnecessary for -20°C storage

*** 20ul sizes contain 0.1% BSA

For technical support and original validation data for this product please contact:
T: 1 (888) 4PTGLAB (1-888-478-4522) (toll free in USA), or 1(312) 455-8498 (outside USA) E: proteintech@ptglab.com
W: ptglab.com

This product is exclusively available under Proteintech Group brand and is not available to purchase from any other manufacturer.

Selected Validation Data



1X10⁶ HeLa cells were intracellularly stained with 0.2 ug Coralite® Plus 647 Anti-Human MCL1 (CL647-66026, Clone:1E3C2) (red), or 0.2 ug Control Antibody (blue). Cells were fixed with 4% PFA.