

For Research Use Only

CoraLite® Plus 647 Anti-Human CD235a (HIR2)



Catalog Number:CL647-65174

Basic Information

Catalog Number: CL647-65174	GenBank Accession Number: BC005319	Purification Method: Affinity purification
Size: 100tests , 5 µl/test	GeneID (NCBI): 2993	CloneNo.: HIR2
Source: Mouse	Full Name: glycophorin A (MNS blood group)	Excitation/Emission maxima wavelengths: 654 nm / 674 nm
Isotype: IgG2b, kappa	Calculated MW: 150 aa, 16 kDa	

Applications

Tested Applications:
FC

Species Specificity:
Human

Background Information

Glycophorin A (GYPA) is the major transmembrane sialoglycoprotein in erythrocytes. It is a dimeric type I transmembrane protein carrying 15 closely clustered O-linked tetrasaccharides capped with sialic acid/N-acetylneuraminic acid (Neu5Ac). This 36 kDa protein represents the major sialoglycoprotein of the red blood cell membrane displaying about one million copies per cell. (PMID: 9490702)

Storage

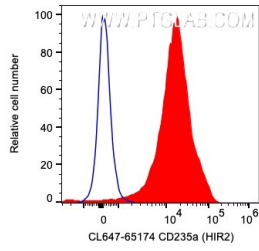
Storage:
Store at 2-8°C. Avoid exposure to light. Stable for one year after shipment.

Storage Buffer:
PBS with 0.09% sodium azide and 0.5% BSA.

For technical support and original validation data for this product please contact:
T: 1 (888) 4PTGLAB (1-888-478-4522) (toll free in USA), or 1(312) 455-8498 (outside USA) E: proteintech@ptglab.com W: ptglab.com

This product is exclusively available under Proteintech Group brand and is not available to purchase from any other manufacturer.

Selected Validation Data



1X10⁶ human red blood cells were surface stained with 5 ul CoraLite® Plus 647 Anti-Human CD235a (CL647-65174, Clone:HIR2) (red) or Mouse IgG2b Isotype Control. Cells were not fixed.