

For Research Use Only

# CoraLite® Plus 647-conjugated GDI2 Monoclonal antibody



Catalog Number:CL647-60078

## Basic Information

<b>Catalog Number:</b> CL647-60078	<b>GenBank Accession Number:</b> BC005145	<b>Purification Method:</b> Protein G purification
<b>Size:</b> 100ul , Concentration: 1000 µg/ml by Nanodrop;	<b>GeneID (NCBI):</b> 2665	<b>CloneNo.:</b> 4B8F3
<b>Source:</b> Mouse	<b>Full Name:</b> GDP dissociation inhibitor 2	<b>Recommended Dilutions:</b> IF 1:200-1:800
<b>Isotype:</b> IgG1	<b>Calculated MW:</b> 47 kDa	<b>Excitation/Emission maxima wavelengths:</b> 654 nm / 674 nm
<b>Immunogen Catalog Number:</b> AG4613	<b>Observed MW:</b> 46 kDa	

## Applications

<b>Tested Applications:</b> IF	<b>Positive Controls:</b> IF : HeLa cells,
<b>Species Specificity:</b> human, mouse	

## Background Information

GDP dissociation inhibitors (GDIs) are proteins that regulate the GDP-GTP exchange reaction of members of the rab family, GDIs can bind and release GDP-bound Rab proteins from membranes. Two GDI proteins towards different Rab proteins have been identified. GDI 1 interacts with almost all of the Rab proteins, while GDI2 interacts with Rab11 but not Rab3A. GDI2 distributes ubiquitously, displaying a membrane bound location in perinuclear regions of cells. GDI-2 was thought to be involved in cellular response to insulin. It electrophoreses as a 46kd protein in SDS-PAGE. (PMID: 7929030; PMID: 19570034). This antibody can bind both GDIs for the close sequences.

## Storage

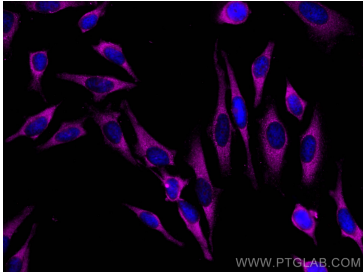
**Storage:**  
Store at -20°C. Avoid exposure to light. Stable for one year after shipment.  
**Storage Buffer:**  
PBS with 50% Glycerol, 0.05% Proclin300, 0.5% BSA, pH 7.3.  
Aliquoting is unnecessary for -20°C storage

\*\*\* 20ul sizes contain 0.1% BSA

For technical support and original validation data for this product please contact:  
T: 1 (888) 4PTGLAB (1-888-478-4522) (toll free in USA), or 1(312) 455-8498 (outside USA)  
E: proteintech@ptglab.com  
W: ptglab.com

This product is exclusively available under Proteintech Group brand and is not available to purchase from any other manufacturer.

## Selected Validation Data



Immunofluorescent analysis of (-20°C Methanol) fixed HeLa cells using Coralite® Plus 647 GDI2 antibody (CL647-60078, Clone: 4B8F3) at dilution of 1:400.