

For Research Use Only

# CoraLite® Plus 647-conjugated KDM1 Polyclonal antibody



Catalog Number: CL647-20813

Featured Product

## Basic Information

<b>Catalog Number:</b> CL647-20813	<b>GenBank Accession Number:</b> BC040194	<b>Purification Method:</b> Antigen affinity purification
<b>Size:</b> 100ul , Concentration: 1000 µg/ml by Nanodrop;	<b>GeneID (NCBI):</b> 23028	<b>Excitation/Emission maxima wavelengths:</b> 654 nm / 674 nm
<b>Source:</b> Rabbit	<b>Full Name:</b> lysine (K)-specific demethylase 1	
<b>Isotype:</b> IgG	<b>Calculated MW:</b> 876 aa, 95 kDa	
<b>Immunogen Catalog Number:</b> AG14778	<b>Observed MW:</b> 110 kDa	

## Applications

**Tested Applications:**  
FC (Intra)

**Species Specificity:**  
human

## Background Information

Lysine specific demethylase 1 (LSD1/BHC110/KIAA0601/p110b/AOF2/KDM1) is an amine oxidase that catalyzes histone demethylation via a flavin adenine dinucleotide (FAD)-dependent oxidative reaction (PMID:19703393). This protein belongs to the flavin monoamine oxidase family. Its structure and function is conserved from yeast to human and it is typically associated to CoREST, a corepressor protein, and histone deacetylases HDAC1 and HDAC2. Human LSD1 consists of 852 amino acids and comprises an N-terminal SWIRM domain, involved in protein interactions, and a C-terminal amine oxidase domain, which contains an insertion that forms the CoREST interacting site (the so-called tower domain) (PMID:20164337). It has 2 isoforms produced by alternative splicing with the calculated molecular mass of 93-95 kDa and apparent molecular mass of 110 kDa.

## Storage

**Storage:**  
Store at -20°C. Avoid exposure to light. Stable for one year after shipment.

**Storage Buffer:**  
PBS with 50% Glycerol, 0.05% Proclin300, 0.5% BSA, pH 7.3.

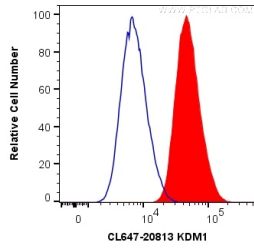
Aliquoting is unnecessary for -20°C storage

\*\*\* 20ul sizes contain 0.1% BSA

For technical support and original validation data for this product please contact:  
T: 1 (888) 4PTGLAB (1-888-478-4522) (toll free in USA), or 1(312) 455-8498 (outside USA) E: proteintech@ptglab.com W: ptglab.com

This product is exclusively available under Proteintech Group brand and is not available to purchase from any other manufacturer.

## Selected Validation Data



1X10<sup>6</sup> MCF-7 cells were intracellularly stained with 0.2 ug CoraLite® Plus 647 Anti-Human KDM1 (CL647-20813) (red), or 0.2 ug CL647-30000; Rabbit IgG Isotype Control (blue). Cells were fixed and permeabilized with Transcription Factor Staining Buffer Kit (PF00011).