

For Research Use Only

CoraLite® Plus 647-conjugated CDK1-Specific Polyclonal antibody



Catalog Number: CL647-19532

Featured Product

Basic Information

Catalog Number: CL647-19532	GenBank Accession Number: NM_001786	Purification Method: Antigen affinity purification
Size: 100ul , Concentration: 1000 µg/ml by Nanodrop;	GeneID (NCBI): 983	Excitation/Emission maxima wavelengths: 654 nm / 674 nm
Source: Rabbit	Full Name: cell division cycle 2, G1 to S and G2 to M	
Isotype: IgG	Calculated MW: 34 kDa	
	Observed MW: 34 kDa	

Applications

Tested Applications:
FC (Intra)

Species Specificity:
human, mouse, rat

Background Information

CDK1, also named as CDC2, belongs to the protein kinase superfamily, CMGC Ser/Thr protein kinase family and CDC2/CDKX subfamily. CDK1 plays a key role in the control of the eukaryotic cell cycle. It is required in higher cells for entry into S-phase and mitosis. CDK1 is a catalytic subunit of the highly conserved protein kinase complex known as M-phase promoting factor (MPF), which is essential for G1/S and G2/M phase transitions of eukaryotic cell cycle. It is a component of the kinase complex that phosphorylates the repetitive C-terminus of RNA polymerase II. Mitotic cyclins stably associate with CDK1 and function as regulatory subunits. CDK1 has 2 isoforms produced by alternative splicing with the molecular mass of 34 kDa and 27 kDa.

Storage

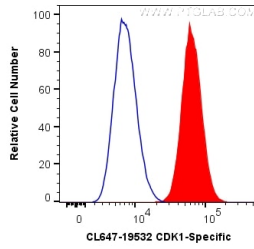
Storage:
Store at -20°C. Avoid exposure to light. Stable for one year after shipment.
Storage Buffer:
PBS with 50% Glycerol, 0.05% Proclin300, 0.5% BSA, pH 7.3.
Aliquoting is unnecessary for -20°C storage

*** 20ul sizes contain 0.1% BSA

For technical support and original validation data for this product please contact:
T: 1 (888) 4PTGLAB (1-888-478-4522) (toll free in USA), or 1(312) 455-8498 (outside USA)
E: proteintech@ptglab.com
W: ptglab.com

This product is exclusively available under Proteintech Group brand and is not available to purchase from any other manufacturer.

Selected Validation Data



1X10⁶ HeLa cells were intracellularly stained with 0.2 ug CoraLite® Plus 647 Anti-Human CDK1-Specific (CL647-19532) (red), or 0.2 ug CL647-30000 Rabbit IgG (blue). Cells were fixed and permeabilized with Transcription Factor Staining Buffer Kit (PF00011).