

For Research Use Only

CoraLite® Plus 647-conjugated PKC Gamma Polyclonal antibody



Catalog Number: CL647-14364

Basic Information

Catalog Number: CL647-14364	GenBank Accession Number: BC047876	Purification Method: Antigen affinity purification
Size: 100ul , Concentration: 1000 µg/ml by Nanodrop;	GeneID (NCBI): 5582	Recommended Dilutions: WB 1:500-1:2000
Source: Rabbit	Full Name: protein kinase C, gamma	Excitation/Emission maxima wavelengths: 650 nm / 665 nm
Isotype: IgG	Calculated MW: 78 kDa	
Immunogen Catalog Number: AG5681	Observed MW: 76-80 kDa	

Applications

Tested Applications: WB	Positive Controls: WB : mouse brain tissue, rat brain tissue
Species Specificity: human, mouse, rat	

Background Information

Protein kinase C (PKC) is a family of serine- and threonine-specific protein kinases that can be activated by calcium and second messenger diacylglycerol. PKC family members phosphorylate a wide variety of protein targets and are known to be involved in diverse cellular signaling pathways. PKC gamma is a neuron-specific member of the classical PKCs and is activated and translocated to subcellular regions as a result of various stimuli, including diacylglycerol synthesis, increased intracellular Ca(2+) and phorbol esters. Defects in this protein have been associated with spinocerebellar ataxia type 14 (SCA14), an autosomal dominant neurodegenerative disease.

Storage

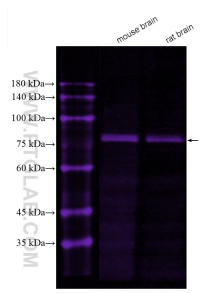
Storage:
Store at -20°C. Avoid exposure to light.
Storage Buffer:
PBS with 50% Glycerol, 0.05% Proclin300, 0.5% BSA, pH 7.3.
Aliquoting is unnecessary for -20°C storage

*** 20ul sizes contain 0.1% BSA

For technical support and original validation data for this product please contact:
T: 1 (888) 4PTGLAB (1-888-478-4522) (toll free in USA), or 1(312) 455-8498 (outside USA)
E: proteintech@ptglab.com
W: ptglab.com

This product is exclusively available under Proteintech Group brand and is not available to purchase from any other manufacturer.

Selected Validation Data



Various lysates were subjected to SDS PAGE followed by western blot with CL647-14364 (PKC Gamma antibody) at dilution of 1:1000 incubated at room temperature for 1.5 hours.