

For Research Use Only

# CoraLite® Plus 647-conjugated FGFR1OP Polyclonal antibody



Catalog Number: CL647-11343

Featured Product

## Basic Information

<b>Catalog Number:</b> CL647-11343	<b>GenBank Accession Number:</b> BC011902	<b>Purification Method:</b> Antigen affinity purification
<b>Size:</b> 100ul , Concentration: 1000 µg/ml by Nanodrop;	<b>GeneID (NCBI):</b> 11116	<b>Recommended Dilutions:</b> IF 1:200-1:800
<b>Source:</b> Rabbit	<b>Full Name:</b> FGFR1 oncogene partner	<b>Excitation/Emission maxima wavelengths:</b> 650 nm / 665 nm
<b>Isotype:</b> IgG	<b>Calculated MW:</b> 43 kDa	
<b>Immunogen Catalog Number:</b> AG1891	<b>Observed MW:</b> 50 kDa	

## Applications

<b>Tested Applications:</b> IF	<b>Positive Controls:</b> IF : C2C12 cells,
<b>Species Specificity:</b> human, mouse, rat	

## Background Information

The fibroblast growth factor receptor 1 oncogene partner (FGFR1OP), FOP, is a centrosomal protein that is involved in the anchoring of microtubules to subcellular structures. Three isoforms have been produced by alternative splicing. A chromosomal aberration involving FGFR1OP may be a cause of stem cell myeloproliferative disorder (MPD). MPD is characterized by myeloid hyperplasia, eosinophilia and T-cell or B-cell lymphoblastic lymphoma and progresses to acute myeloid leukemia.

## Storage

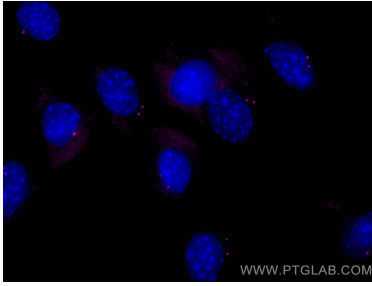
**Storage:**  
Store at -20°C. Avoid exposure to light.  
**Storage Buffer:**  
PBS with 50% Glycerol, 0.05% Proclin300, 0.5% BSA, pH 7.3.  
Aliquoting is unnecessary for -20°C storage

\*\*\* 20ul sizes contain 0.1% BSA

For technical support and original validation data for this product please contact:  
T: 1 (888) 4PTGLAB (1-888-478-4522) (toll free in USA), or 1(312) 455-8498 (outside USA) E: proteintech@ptglab.com W: ptglab.com

This product is exclusively available under Proteintech Group brand and is not available to purchase from any other manufacturer.

## Selected Validation Data



Immunofluorescent analysis of (-20°C Methanol) fixed C2C12 cells using CoraLite® Plus 647 FGFR1OP antibody (CL647-11343) at dilution of 1:400.