

For Research Use Only

CoraLite® Plus 647-conjugated GYS1 Polyclonal antibody



Catalog Number: CL647-10566

Featured Product

Basic Information

Catalog Number: CL647-10566	GenBank Accession Number: BC007688	Purification Method: Antigen affinity purification
Size: 100ul , Concentration: 1 mg/mL by Nanodrop;	GeneID (NCBI): 2997	Excitation/Emission maxima wavelengths: 654 nm / 674 nm
Source: Rabbit	Full Name: glycogen synthase 1 (muscle)	
Isotype: IgG	Calculated MW: 84 kDa	
Immunogen Catalog Number: AG0857	Observed MW: 84 kDa	

Applications

Tested Applications:
FC (Intra)

Species Specificity:
human, mouse, rat

Background Information

GYS1(Glycogen [starch] synthase, muscle) is the the rate limiting enzyme of the insulin-induced glycogenesis, transferring glucose units from UDP-Glc to a glycogen primer. It catalyzes the linear addition of glucose residues to the branching structure of glycogen, providing a convenient store of glucose for times of metabolic need. This protein has 2 isoforms produced by alternative splicing.

Storage

Storage:
Store at -20°C. Avoid exposure to light. Stable for one year after shipment.

Storage Buffer:
PBS with 50% Glycerol, 0.05% Proclin300, 0.5% BSA, pH 7.3.

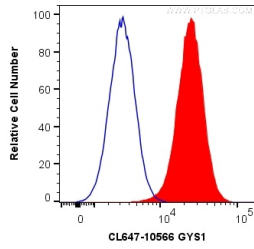
Aliquoting is unnecessary for -20°C storage

*** 20ul sizes contain 0.1% BSA

For technical support and original validation data for this product please contact:
T: 1 (888) 4PTGLAB (1-888-478-4522) (toll free in USA), or 1(312) 455-8498 (outside USA) E: proteintech@ptglab.com W: ptglab.com

This product is exclusively available under Proteintech Group brand and is not available to purchase from any other manufacturer.

Selected Validation Data



1X10⁶ HepG2 cells were intracellularly stained with 0.2 ug CoraLite® Plus 647 Anti-Human GYS1 (CL647-10566) (red), or 0.2 ug Isotype Control (blue). Cells were fixed with 4% PFA and permeabilized with Flow Cytometry Perm Buffer (PF00011-C).