

For Research Use Only

CoraLite® Plus 594-conjugated CCT2 Monoclonal antibody



Catalog Number: CL594-68214

Basic Information

Catalog Number: CL594-68214	GenBank Accession Number: BC113516	Purification Method: Protein G purification
Size: 100ul , Concentration: 1000 µg/ml by Nanodrop;	GeneID (NCBI): 10576	CloneNo.: 2H6C7
Source: Mouse	Full Name: chaperonin containing TCP1, subunit 2 (beta)	Recommended Dilutions: IF 1:50-1:500
Isotype: IgG1	Calculated MW: 535 aa, 57 kDa	Excitation/Emission maxima wavelengths: 594 nm / 615 nm
Immunogen Catalog Number: AG19264	Observed MW: 50-58 kDa	

Applications

Tested Applications: FC (Intra), IF	Positive Controls: IF : NIH/3T3 cells,
Species Specificity: Human, Mouse, Pig, Rabbit, Rat	

Background Information

CCT2 is a gene encoding a molecular chaperone that is a member of the chaperonin containing TCP1 complex (CCT), also known as the TCP1 ring complex (TRiC). The switch of CCT2's role from a chaperonin to a specific aggrephagy receptor is achieved by CCT2 monomer formation. CCT2 functions independently of ubiquitin and the TRiC complex to facilitate the autophagic clearance of solid protein aggregates. CCT2 has 2 isoforms with the molecular mass of 53 and 57 kDa. (PMID: 35699934)

Storage

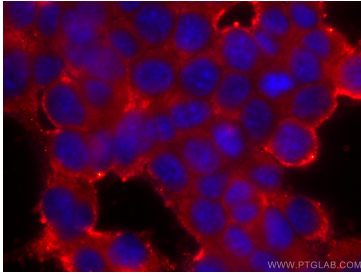
Storage:
Store at -20°C. Avoid exposure to light. Stable for one year after shipment.
Storage Buffer:
PBS with 50% Glycerol, 0.05% Proclin300, 0.5% BSA, pH 7.3.
Aliquoting is unnecessary for -20°C storage

*** 20ul sizes contain 0.1% BSA

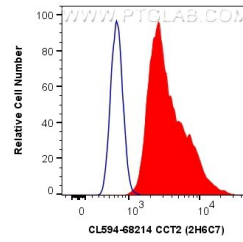
For technical support and original validation data for this product please contact:
T: 1 (888) 4PTGLAB (1-888-478-4522) (toll free in USA), or 1(312) 455-8498 (outside USA)
E: proteintech@ptglab.com
W: ptglab.com

This product is exclusively available under Proteintech Group brand and is not available to purchase from any other manufacturer.

Selected Validation Data



Immunofluorescent analysis of (-20°C Methanol) fixed NIH/3T3 cells using CoraLite® Plus 594 CCT2 antibody (CL594-68214, Clone: 2H6C7) at dilution of 1:200.



1X10⁶ NIH/3T3 cells were intracellularly stained with 0.5 ug CoraLite® Plus 594 Anti-Human CCT2 (CL594-68214, Clone:2H6C7) (red), or 0.5 ug CoraLite® 594 Mouse IgG1 Isotype Control (MOPC-21) (CL594-65124, Clone: MOPC-21) (blue). Cells were fixed with 4% PFA and permeabilized with Flow Cytometry Perm Buffer (PF00011-C).