

For Research Use Only

# CoraLite®594-conjugated RPL9 Monoclonal antibody



Catalog Number:CL594-68054

## Basic Information

<b>Catalog Number:</b> CL594-68054	<b>GenBank Accession Number:</b> BC066318	<b>Purification Method:</b> Protein G purification
<b>Size:</b> 100ul , Concentration: 1000 µg/ml by Nanodrop;	<b>GeneID (NCBI):</b> 6133	<b>CloneNo.:</b> 2A6B11
<b>Source:</b> Mouse	<b>Full Name:</b> ribosomal protein L9	<b>Recommended Dilutions:</b> IF 1:50-1:500
<b>Isotype:</b> IgG1	<b>Calculated MW:</b> 22 kDa	<b>Excitation/Emission maxima wavelengths:</b> 593 nm / 614 nm
<b>Immunogen Catalog Number:</b> AG5391	<b>Observed MW:</b> 22 kDa	

## Applications

<b>Tested Applications:</b> IF	<b>Positive Controls:</b> IF : mouse cerebellum tissue,
<b>Species Specificity:</b> Human, Mouse, Rat	

## Background Information

### Storage

**Storage:**  
Store at -20°C. Avoid exposure to light. Stable for one year after shipment.  
**Storage Buffer:**  
PBS with 50% Glycerol, 0.05% Proclin300, 0.5% BSA, pH 7.3.  
Aliquoting is unnecessary for -20°C storage

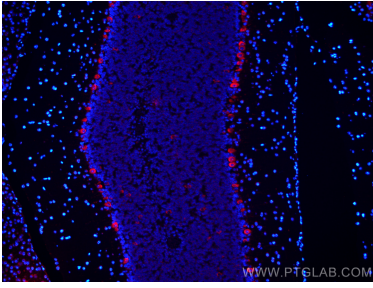
\*\*\* 20ul sizes contain 0.1% BSA

For technical support and original validation data for this product please contact:  
T: 1 (888) 4PTGLAB (1-888-478-4522) (toll free in USA), or 1(312) 455-8498 (outside USA)  
E: [proteintech@ptglab.com](mailto:proteintech@ptglab.com)  
W: [ptglab.com](http://ptglab.com)

This product is exclusively available under Proteintech Group brand and is not available to purchase from any other manufacturer.

---

## Selected Validation Data



Immunofluorescent analysis of (4% PFA) fixed mouse cerebellum tissue using CoraLite®594 RPL9 antibody (CL594-68054, Clone: 2A6B11 ) at dilution of 1:200.