

For Research Use Only

CoraLite®594-conjugated PSME1 Monoclonal antibody



Catalog Number:CL594-67928

Basic Information

Catalog Number: CL594-67928	GenBank Accession Number: BC007503	Purification Method: Protein G purification
Size: 100ul , Concentration: 1000 µg/ml by Nanodrop;	GeneID (NCBI): 5720	CloneNo.: 1F7E2
Source: Mouse	Full Name: proteasome (prosome, macropain) activator subunit 1 (PA28 alpha)	Recommended Dilutions: IF 1:50-1:500
Isotype: IgG1	Calculated MW: 29 kDa	Excitation/Emission maxima wavelengths: 588 nm / 604 nm
Immunogen Catalog Number: AG30549	Observed MW: 29 kDa	

Applications

Tested Applications: FC (Intra), IF	Positive Controls: IF : MCF-7 cells,
Species Specificity: Human, mouse	

Background Information

The principal function of the proteasome is targeted degradation of intracellular proteins. Activity of the 20S proteasome is controlled by regulatory complexes that bind to the ends of the cylindrical proteasome. 11S regulator (REG or PA28), is a complex of 28 kDa subunits that is thought to activate proteasomes toward the production of antigenic peptides. Human PSME1 and PSME2 genes encode the two proteasome activators PA28 alpha and beta, respectively, which have been implicated in antigen processing for loading class I MHC molecules. The PA28 activator complex enhances the generation of class I binding peptides by altering the cleavage pattern of the proteasome.

Storage

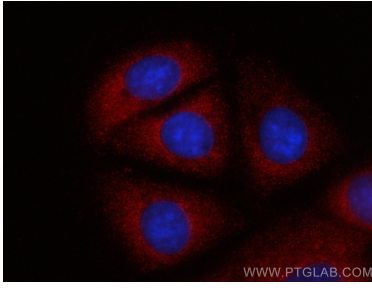
Storage:
Store at -20°C. Avoid exposure to light. Stable for one year after shipment.
Storage Buffer:
PBS with 50% Glycerol, 0.05% Proclin300, 0.5% BSA, pH 7.3.
Aliquoting is unnecessary for -20°C storage

*** 20ul sizes contain 0.1% BSA

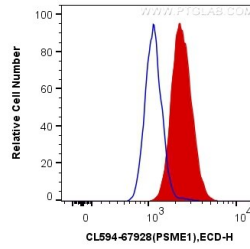
For technical support and original validation data for this product please contact:
T: 1 (888) 4PTGLAB (1-888-478-4522) (toll free in USA), or 1(312) 455-8498 (outside USA) E: proteintech@ptglab.com W: ptglab.com

This product is exclusively available under Proteintech Group brand and is not available to purchase from any other manufacturer.

Selected Validation Data



Immunofluorescent analysis of (-20°C Methanol) fixed MCF-7 cells using CoraLite®594 PSME1 antibody (CL594-67928, Clone: 1F7E2) at dilution of 1:200.



1X10⁶ MCF-7 cells were intracellularly stained with 0.4 ug CoraLite®594 Anti-Human PSME1 (CL594-67928, Clone:1F7E2) (red), or 0.4 ug Control Antibody. Cells were fixed with 4% PFA and permeabilized with Flow Cytometry Perm Buffer (PF00011-C).