

For Research Use Only

# CoraLite®594-conjugated Importin Alpha 5 Monoclonal antibody



Catalog Number:CL594-67897

## Basic Information

<b>Catalog Number:</b> CL594-67897	<b>GenBank Accession Number:</b> BC002374	<b>Purification Method:</b> Protein A purification
<b>Size:</b> 100ul , Concentration: 1000 µg/ml by Nanodrop;	<b>GeneID (NCBI):</b> 3836	<b>CloneNo.:</b> 2A7G7
<b>Source:</b> Mouse	<b>Full Name:</b> karyopherin alpha 1 (importin alpha 5)	<b>Recommended Dilutions:</b> IF 1:50-1:500
<b>Isotype:</b> IgG2a	<b>Calculated MW:</b> 60 kDa	<b>Excitation/Emission maximum wavelengths:</b> 593 nm / 614 nm
<b>Immunogen Catalog Number:</b> AG12751	<b>Observed MW:</b> 60-62 kDa	

## Applications

<b>Tested Applications:</b> IF	<b>Positive Controls:</b> IF : HepG2 cells,
<b>Species Specificity:</b> Human, mouse, rat	

## Background Information

Importins (alpha and beta) are transport factors that transport proteins into the nucleus. alpha importins function by binding transcription factors at nuclear localization sequences (NLS), and associating with importin beta subunits to translocate through the nuclear pore. Six isoforms of alpha importins have been described in human. Importin alpha 5 is the predominant importin in adult CNS and is essential for differentiation and viability of neural cells.

## Storage

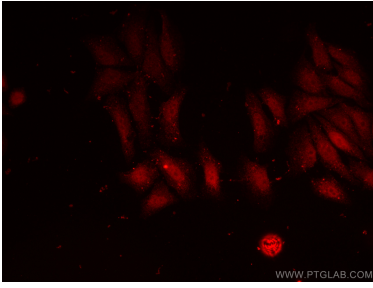
**Storage:**  
Store at -20°C. Avoid exposure to light. Stable for one year after shipment.  
**Storage Buffer:**  
PBS with 50% Glycerol, 0.05% Proclin300, 0.5% BSA, pH 7.3.  
Aliquoting is unnecessary for -20°C storage

\*\*\* 20ul sizes contain 0.1% BSA

For technical support and original validation data for this product please contact:  
T: 1 (888) 4PTGLAB (1-888-478-4522) (toll free in USA), or 1(312) 455-8498 (outside USA)  
E: proteintech@ptglab.com  
W: ptglab.com

This product is exclusively available under Proteintech Group brand and is not available to purchase from any other manufacturer.

## Selected Validation Data



Immunofluorescent analysis of (4% PFA) fixed HepG2 cells using CoraLite®594 Importin Alpha 5 antibody (CL594-67897, Clone: 2A7G7) at dilution of 1:200.