

For Research Use Only

CoraLite®594-conjugated CTPS2 Monoclonal antibody



Catalog Number:CL594-67734

Basic Information

Catalog Number: CL594-67734	GenBank Accession Number: BC034986	Purification Method: Protein A purification
Size: 100ul , Concentration: 1000 µg/ml by Nanodrop;	GeneID (NCBI): 56474	CloneNo.: 1A3B8
Source: Mouse	Full Name: CTP synthase II	Recommended Dilutions: IF 1:50-1:500
Isotype: IgG2a	Calculated MW: 586 aa, 66 kDa	Excitation/Emission maxima wavelengths: 593 nm / 614 nm
Immunogen Catalog Number: AG30258	Observed MW: 66 kDa	

Applications

Tested Applications: IF	Positive Controls: IF : PC-12 cells,
Species Specificity: Human, Mouse	

Background Information

CTPS2 (CTP synthase 2) is also named as UTP--ammonia ligase 2 and belongs to the CTP synthase family. It catalyzes the ATP-dependent amination of UTP to CTP with either L-glutamine or ammonia as the source of nitrogen and constitutes the rate-limiting enzyme in the synthesis of cytosine nucleotides.

Storage

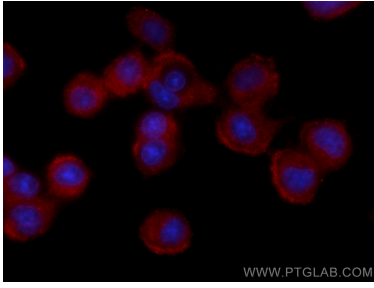
Storage:
Store at -20°C. Avoid exposure to light. Stable for one year after shipment.
Storage Buffer:
PBS with 50% Glycerol, 0.05% Proclin300, 0.5% BSA, pH 7.3.
Aliquoting is unnecessary for -20°C storage

*** 20ul sizes contain 0.1% BSA

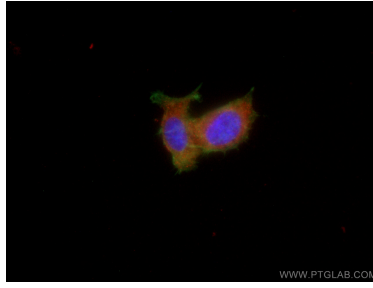
For technical support and original validation data for this product please contact:
T: 1 (888) 4PTGLAB (1-888-478-4522) (toll free in USA), or 1(312) 455-8498 (outside USA) E: proteintech@ptglab.com W: ptglab.com

This product is exclusively available under Proteintech Group brand and is not available to purchase from any other manufacturer.

Selected Validation Data



Immunofluorescent analysis of (-20°C Methanol) fixed PC-12 cells using CoraLite® 594 CTP52 antibody (CL594-67734, Clone: 1A3B8) at dilution of 1:200.



Immunofluorescent analysis of (4% PFA) fixed PC-12 cells using CoraLite® 594 CTP52 antibody (CL594-67734, Clone: 1A3B8) at dilution of 1:200, CL488-Phalloidin (green).