

For Research Use Only

CoraLite®594-conjugated PSMA6 Monoclonal antibody



Catalog Number:CL594-67695

Basic Information

Catalog Number: CL594-67695	GenBank Accession Number: BC023659	Purification Method: Protein A purification
Size: 100ul , Concentration: 1000 µg/ml by Nanodrop;	GeneID (NCBI): 5687	CloneNo.: 1D4B2
Source: Mouse	Full Name: proteasome (prosome, macropain) subunit, alpha type, 6	Recommended Dilutions: IF 1:50-1:500
Isotype: IgG2b	Calculated MW: 246 aa, 27 kDa	Excitation/Emission maxima wavelengths: 588 nm / 604 nm
Immunogen Catalog Number: AG21761	Observed MW: 30 kDa	

Applications

Tested Applications: IF	Positive Controls: IF : human lung cancer tissue,
Species Specificity: Human, mouse, rat	

Background Information

PSMA6(Proteasome subunit alpha type-6) is also named as PROS27 and belongs to the peptidase T1A family. The proteasome is a multicatalytic proteinase complex which is characterized by its ability to cleave peptides with Arg, Phe, Tyr, Leu, and Glu adjacent to the leaving group at neutral or slightly basic pH. It also has an ATP-dependent proteolytic activity.

Storage

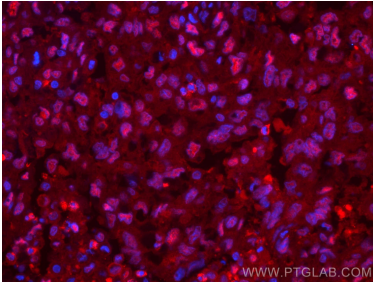
Storage:
Store at -20°C. Avoid exposure to light. Stable for one year after shipment.
Storage Buffer:
PBS with 50% Glycerol, 0.05% Proclin300, 0.5% BSA, pH 7.3.
Aliquoting is unnecessary for -20°C storage

*** 20ul sizes contain 0.1% BSA

For technical support and original validation data for this product please contact:
T: 1 (888) 4PTGLAB (1-888-478-4522) (toll free in USA), or 1(312) 455-8498 (outside USA)
E: proteintech@ptglab.com
W: ptglab.com

This product is exclusively available under Proteintech Group brand and is not available to purchase from any other manufacturer.

Selected Validation Data



Immunofluorescent analysis of (4% PFA) fixed human lung cancer tissue using CoraLite®594 PSMA6 antibody (CL594-67695, Clone: 1D4B2) at dilution of 1:200.