

For Research Use Only

CoraLite®594-conjugated EIF1 Monoclonal antibody



Catalog Number:CL594-67601

Basic Information

Catalog Number: CL594-67601	GenBank Accession Number: BC005118	Purification Method: Protein A purification
Size: 100ul , Concentration: 1000 µg/ml by Nanodrop;	GeneID (NCBI): 10209	CloneNo.: 2G8C6
Source: Mouse	Full Name: eukaryotic translation initiation factor 1	Recommended Dilutions: IF 1:50-1:500
Isotype: IgG2b	Calculated MW: 13 kDa	Excitation/Emission maxima wavelengths: 593 nm / 614 nm
Immunogen Catalog Number: AG7843	Observed MW: 13 kDa	

Applications

Tested Applications: IF	Positive Controls: IF : MCF-7 cells, HepG2 cells
Species Specificity: Human	

Background Information

It is a necessary for scanning and involved in initiation site selection. Promotes the assembly of 48S ribosomal complexes at the authentic initiation codon of a conventional capped mRNA. Molecular weight is 13kd.

Storage

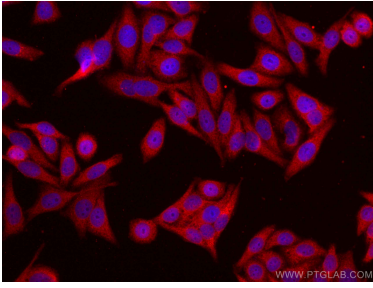
Storage:
Store at -20°C. Avoid exposure to light.
Storage Buffer:
PBS with 50% Glycerol, 0.05% Proclin300, 0.5% BSA, pH 7.3.
Aliquoting is unnecessary for -20°C storage

*** 20ul sizes contain 0.1% BSA

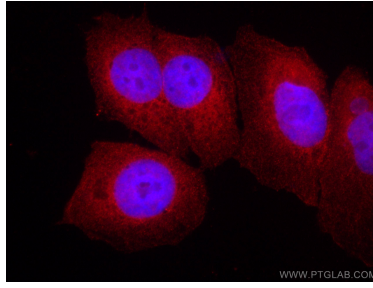
For technical support and original validation data for this product please contact:
T: 1 (888) 4PTGLAB (1-888-478-4522) (toll free in USA), or 1(312) 455-8498 (outside USA) E: proteintech@ptglab.com W: ptglab.com

This product is exclusively available under Proteintech Group brand and is not available to purchase from any other manufacturer.

Selected Validation Data



Immunofluorescent analysis of (-20°C Ethanol) fixed HepG2 cells using CoraLite®594 EIF1 antibody (CL594-67601, Clone: 2G8C6) at dilution of 1:200.



Immunofluorescent analysis of (4% PFA) fixed MCF-7 cells using CoraLite®594 EIF1 antibody (CL594-67601, Clone: 2G8C6) at dilution of 1:200.