

For Research Use Only

CoraLite®594-conjugated UAP1 Monoclonal antibody



Catalog Number:CL594-67545

Basic Information

Catalog Number: CL594-67545	GenBank Accession Number: BC009377	Purification Method: Protein G purification
Size: 100ul , Concentration: 1000 µg/ml by Nanodrop;	GeneID (NCBI): 6675	CloneNo.: 2C7B2
Source: Mouse	Full Name: UDP-N-acetylglucosamine pyrophosphorylase 1	Recommended Dilutions: IF 1:50-1:500
Isotype: IgG1	Calculated MW: 505 aa, 57 kDa	Excitation/Emission maxima wavelengths: 588 nm / 604 nm
Immunogen Catalog Number: AG9513	Observed MW: 57-59 kDa	

Applications

Tested Applications: IF	Positive Controls: IF : PC-3 cells,
Species Specificity: Human	

Background Information

UAP1 can convert UTP and GlcNAc-1-P into UDP-GlcNAc, it can also convert UTP and GalNAc-1-P into UDP-GalNAc. There are three isoforms of UAP1, among which isoform AGX1 has 2 to 3 times higher activity towards GalNAc-1-P, while isoform AGX2 has 8 times more activity towards GlcNAc-1-P. It has been reported that UAP1 is specific and highly expressed in prostate cancer. UAP1 can protect cells against inhibitors of N-linked glycosylation. UAP1 may play an important role in maintaining INS responsiveness. 67545-1-Ig detects 57 and 59 kDa isoforms in SDS-PAGE. (PMID:25241896)

Storage

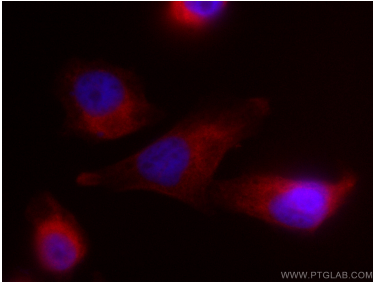
Storage:
Store at -20°C. Avoid exposure to light. Stable for one year after shipment.
Storage Buffer:
PBS with 50% Glycerol, 0.05% Proclin300, 0.5% BSA, pH 7.3.
Aliquoting is unnecessary for -20°C storage

*** 20ul sizes contain 0.1% BSA

For technical support and original validation data for this product please contact:
T: 1 (888) 4PTGLAB (1-888-478-4522) (toll free in USA), or 1(312) 455-8498 (outside USA)
E: proteintech@ptglab.com
W: ptglab.com

This product is exclusively available under Proteintech Group brand and is not available to purchase from any other manufacturer.

Selected Validation Data



Immunofluorescent analysis of (4% PFA) fixed PC-3 cells using CoraLite®594 UAP1 antibody (CL594-67545, Clone: 2C7B2) at dilution of 1:200.