

For Research Use Only

CoraLite®594-conjugated RALYL Monoclonal antibody



Catalog Number:CL594-67534

Basic Information

Catalog Number: CL594-67534	GenBank Accession Number: BC031090	Purification Method: Protein G purification
Size: 100ul , Concentration: 1000 µg/ml by Nanodrop;	GeneID (NCBI): 138046	CloneNo.: 1F3F4
Source: Mouse	Full Name: RALY RNA binding protein-like	Recommended Dilutions: IF 1:50-1:500
Isotype: IgG1	Calculated MW: 291 aa, 32 kDa	Excitation/Emission maxima wavelengths: 594 nm / 615 nm
Immunogen Catalog Number: AG11676	Observed MW: 35-40 kDa	

Applications

Tested Applications: FC (Intra), IF	Positive Controls: IF : HepG2 cells,
Species Specificity: Human, mouse, rat, pig	

Background Information

RALY RNA binding protein-like (RALYL) belongs to the RALY subfamily. RALYL locates in 8q21.2, the function of which is RNA-binding and nucleotide binding. The RALYL high expression in the normal adrenal, kidney and brain (Shyamsundar et al., 2005). Furthermore, RALYL expression down-regulated correlates with mental disorder (Lee et al., 2007), Parkinson's disease (Moran et al., 2006), brain cancer (Maris et al., 2008), adrenal cancer (Giordano et al., 2009) and kidney cancer (Higgins et al., 2003). The expression of RALYL was significantly low in Clear Cell Renal Cell Carcinoma and correlated with a poor prognosis in a large number of clinical samples. Our findings showed that RALYL may be a potential therapeutic target as well as a poor prognostic

Storage

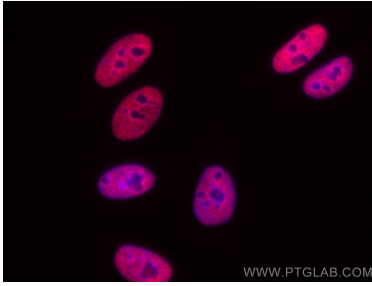
Storage:
Store at -20°C. Avoid exposure to light. Stable for one year after shipment.
Storage Buffer:
PBS with 50% Glycerol, 0.05% Proclin300, 0.5% BSA, pH 7.3.
Aliquoting is unnecessary for -20°C storage

*** 20ul sizes contain 0.1% BSA

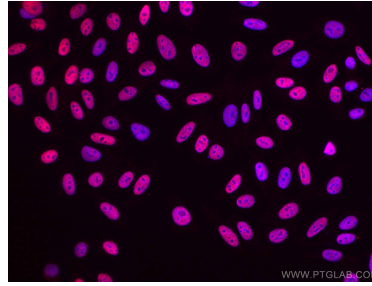
For technical support and original validation data for this product please contact:
T: 1 (888) 4PTGLAB (1-888-478-4522) (toll free in USA), or 1(312) 455-8498 (outside USA)
E: proteintech@ptglab.com
W: ptglab.com

This product is exclusively available under Proteintech Group brand and is not available to purchase from any other manufacturer.

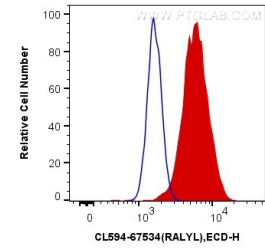
Selected Validation Data



Immunofluorescent analysis of (4% PFA) fixed HepG2 cells using CoraLite®594 RALYL antibody (CL594-67534, Clone: 1F3F4) at dilution of 1:200.



Immunofluorescent analysis of (4% PFA) fixed HepG2 cells using CoraLite®594 RALYL antibody (CL594-67534, Clone: 1F3F4) at dilution of 1:100.



1X10⁶ HepG2 cells were intracellularly stained with 0.4 ug CoraLite®594 Anti-Human RALYL (CL594-67534, Clone:1F3F4) (red), or 0.4 ug Control Antibody. Cells were fixed and permeabilized with Transcription Factor Staining Buffer Kit (PF00011).