

For Research Use Only

CoraLite®594-conjugated MYL4 Monoclonal antibody



Catalog Number:CL594-67533

Basic Information

| | | |
|---|--|---|
| Catalog Number: CL594-67533 | GenBank Accession Number: BC030228 | Purification Method: Protein A purification |
| Size: 100ul , Concentration: 1000 µg/ml by Nanodrop; | GeneID (NCBI): 4635 | CloneNo.: 2F5C1 |
| Source: Mouse | Full Name: myosin, light chain 4, alkali; atrial, embryonic | Recommended Dilutions: IF 1:50-1:500 |
| Isotype: IgG2b | Calculated MW: 197 aa, 22 kDa | Excitation/Emission maxima wavelengths: 593 nm / 614 nm |
| Immunogen Catalog Number: AG19244 | Observed MW: 22-25 kDa | |

Applications

| | |
|---|---|
| Tested Applications: IF | Positive Controls: IF : mouse heart tissue, |
| Species Specificity: Human, mouse, rat, pig | |

Background Information

Myosin light-chain 4 (MYL4) encodes an essential myosin light chain that is expressed in embryonic whole heart and skeletal muscle. It is specifically expressed in human atria after birth. MYL4 is essential for atrial electrical, functional, and structural integrity, and MYL4 dysfunction can produce severe inherited atrial cardiomyopathy.

Storage

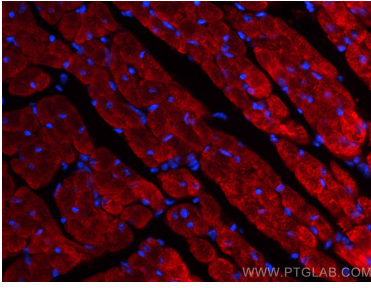
Storage:
Store at -20°C. Avoid exposure to light.
Storage Buffer:
PBS with 50% Glycerol, 0.05% Proclin300, 0.5% BSA, pH 7.3.
Aliquoting is unnecessary for -20°C storage

*** 20ul sizes contain 0.1% BSA

For technical support and original validation data for this product please contact:
T: 1 (888) 4PTGLAB (1-888-478-4522) (toll free in USA), or 1(312) 455-8498 (outside USA)
E: proteintech@ptglab.com
W: ptglab.com

This product is exclusively available under Proteintech Group brand and is not available to purchase from any other manufacturer.

Selected Validation Data



Immunofluorescent analysis of (4% PFA) fixed mouse heart tissue using CoraLite® 594 MYL4 antibody (CL594-67533, Clone: 2F5C1) at dilution of 1:100.