

For Research Use Only

CoraLite®594-conjugated Glycophorin A Monoclonal antibody



Catalog Number:CL594-66778

Basic Information

Catalog Number: CL594-66778	GenBank Accession Number: BC005319	Purification Method: Protein G purification
Size: 100ul , Concentration: 1000 µg/ml by Nanodrop;	GeneID (NCBI): 2993	CloneNo.: 2B12G10
Source: Mouse	Full Name: glycophorin A (MNS blood group)	Recommended Dilutions: IF 1:50-1:500
Isotype: IgG1	Calculated MW: 150 aa, 16 kDa	Excitation/Emission maxima wavelengths: 593 nm / 614 nm
Immunogen Catalog Number: AG8635	Observed MW: 36-38 kDa	

Applications

Tested Applications: IF	Positive Controls: IF : human placenta tissue,
Species Specificity: Human	

Background Information

Glycophorin A (GYPA) is the major transmembrane sialoglycoprotein in erythrocytes. It is a dimeric type I transmembrane protein carrying 15 closely clustered O-linked tetrasaccharides capped with sialic acid/N-acetylneuraminic acid (Neu5Ac). This 36 kDa protein represents the major sialoglycoprotein of the red blood cell membrane displaying about one million copies per cell. (PMID: 9490702)

Storage

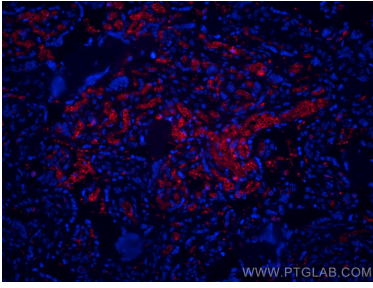
Storage:
Store at -20°C. Avoid exposure to light.
Storage Buffer:
PBS with 50% Glycerol, 0.05% Proclin300, 0.5% BSA, pH 7.3.
Aliquoting is unnecessary for -20°C storage

*** 20ul sizes contain 0.1% BSA

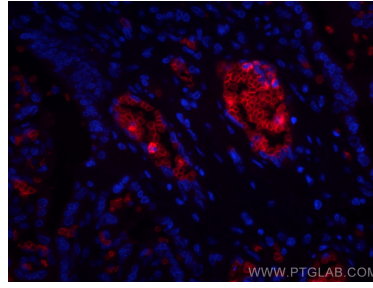
For technical support and original validation data for this product please contact:
T: 1 (888) 4PTGLAB (1-888-478-4522) (toll free in USA), or 1(312) 455-8498 (outside USA)
E: proteintech@ptglab.com
W: ptglab.com

This product is exclusively available under Proteintech Group brand and is not available to purchase from any other manufacturer.

Selected Validation Data



Immunofluorescent analysis of (4% PFA) fixed human placenta tissue using CoraLite®594 Glycophorin A antibody (CL594-66778, Clone: 2B12G10) at dilution of 1:200.



Immunofluorescent analysis of (4% PFA) fixed human placenta tissue using CoraLite®594 Glycophorin A antibody (CL594-66778, Clone: 2B12G10) at dilution of 1:200.